



Upcoming BCMC Social



The 14 Peaks: A Life Above 8,000 Meters Without the Mask

December 9th, 2025 at the Anza Club

We're thrilled to welcome Azim Gheyichisaz to the club's upcoming social. Azim is globally recognized for an extraordinary and rare achievement in mountaineering: He is one of the select few individuals in the world to successfully summit all 14 peaks above 8,000 meters without the aid of supplementary oxygen. Summiting one of these peaks "clean" is an extraordinary achievement. Climbing all 14 is the highest philosophical and physical benchmark in high altitude mountaineering.

Azim Gheyichisaz (Persian: **عظیم قیچی ساز**) was born in 1981 in Tabriz, Iran. He is a member of the Iranian national mountaineering team and has become one of Iran's most influential mountaineers, serving as a mentor and role model for new generations of elite Iranian climbers. His educational background includes a degree in machinery from technical high school, and he is a student of Physical Education at the University of Tabriz. His status as the first Iranian to climb all 14 Eight-thousanders without supplementary oxygen imbues his accomplishment with immense national pride and cultural significance. This achievement was officially recognized at the highest levels of the Iranian government, evidenced by congratulations from President Rouhani.

Submit Your Content

editor@bcmc.ca

Submissions: We want you to write to us! Any submitted news, events, trip reports, letters relevant to the BCMC will be published unless the club executive decides otherwise.

About Submissions: For submitted photos, high resolutions are much appreciated. Submitted material may be edited for clarity or brevity, or for consistency with club policies. Opinions and comments expressed in this newsletter are not necessarily those of the BCMC.

About the BCMC Newsletter

The BCMC Newsletter is an official publication of the B.C. Mountaineering Club and is published 10 times per year (every month except July and August). All material within this newsletter is copyright © British Columbia Mountaineering Club.

Cover Photo: Nahmint Mountain from Peak 5040, by Trevor Barker

Club Updates

2025 Annual General Meeting Summary

The BCMC's AGM was successfully kicked off at the Anza Club on November 11th, where the club's state of affairs was presented by our board of directors and followed by an election for the 2026 executive board. Included for your reading below are the details of club's business including outgoing and incoming board members, director's reports and financials. First, a huge thank you those outgoing members who have been instrumental to the club's runnings:

- **David Scanlon** – Cabins
- **Philip Gibbs** – Secretary
- **Melissa Murray** – Socials
- **Jack Casey** – Courses
- **Wayne Pattern** – Trips
- **Marie-Chris Amante** – Mentorships

Now to introduce our incoming 2026 board members (*new members are denoted with a: **)

- **Greg Hamilton** – President
- **Glenn Woodsworth** – Past President
- **Chris Ludwig** – Vice President
- **Dave Woodsworth** – Treasurer
- **Stephen Hobbs*** – Secretary
- **Jane Desbarats*** – Socials
- **Kathleen Cheng** – Memberships
- **Ian Harris** – Courses
- **Evan Zucchelli*** – Trips
- **Brian Sheffield** – Trails
- **Shashi Shanbhag** – Mentorships
- **Paul Kubik** – Advocacy
- **Francis Bailey** – Editor
- **Rick Sheppard** – Conservation
- **Winifred Swatscheck** – At Large
- **Elaine Fisher** – At Large

Finally, this club would not run without the tireless efforts of our volunteers and assistants to the executive committee which include:

Radmila Bridges, Katarina Petrovic, Anders Ourom, Brittany Zenger, Anne Blossom, Paul Olynek, Waldemar Jonsson, Bryant Lim, Cliff Eschner, Meredith Pavlick, Ian Hopper, Einar Hanson, Cory Tuddenham, Bruce Cassels, Emanuel Porra, David Robertson, Theo Levison, Nick Sheffield, Ian McGillivray, Dave Percival, Henry Marsden, Laura Pipe, Matthew Proctor, Joanne Boutin, Ove Albinsson, Ilze Rupners, Rossana Ho, Momo Xiang.

We also want to extend a special thanks to anyone who was not mentioned, but volunteered in any capacity for the club this past year.

President's Report

By Greg Hamilton

I am reporting to you for the first time as your President. I've been fortunate to have an Executive and keen group of members who have spent many many hours making the Club work better and more effectively for you.

The last few years has seen the club membership stabilize at just under 1500. That's a long way from the first time the club broke 400 members in 1998 when I shared the membership chair with Peter Goy and Nancy Henderson. More importantly, member participation in club activities including trips, the mentorship program, the fitness program, and attendance at socials has increased steadily since we put the pandemic behind us. Our community is stronger because of your participation. Thank you.

Our trip schedule remains the cornerstone of the club's activities and its the Executive's objective to offer a wide variety of trips that appeal all aspects of mountaineering from easy short hikes to the more challenging and technical multi-day climbs and ski trips. We always need more volunteers. Many thanks to Wayne Pattern, Marie Amante and Radmila Bridges for the many hours they spent vetting trips, wrangling new trip organizers and reviewing organizers post trip reports. There were at least 30 trips/events per month, with September 2025 having 55 events!

Progress has also been made on the redesign of the current website, which has been the online face of the club since it went live in 2013. Through the hard work of Chris Ludwig, Bill Maurer and Francis Bailey the older website architecture continues to function almost all of the time, while the new site is in development.

The monthly newsletter is back! The club, through Francis Bailey's Metronomic-like cadence over the last year has reestablished something that I feel had been lacking since the pandemic ended: A regular means for the club to communicate to its members about what's happening in the club. It's been far too long since the club produced a newsletter on a regular basis. Well, that changed for the better in 2025. Thank you, Francis.

The club's social director, Melissa Murray, was incredibly busy over the year. Besides organizing our great monthly entertainment, summer barbeque and the annual volunteer appreciation event, she successfully managed the club's swag site, was the club's liaison with VIMFF, and produced the marketing things that draw new members to the club. An unfortunate fire in her home had her step away from her volunteer activities in September while she settles into a new home with her family.

The Norm Deacon Hut is almost open! This is Dave Scanlon's project from start to finish and he has done a remarkable job in bringing his vision to life there, with the help of club volunteers Ian Hopper, Einar Hanson, Cory Tuddenham, Bruce Cassels, Emanuel Porra, and David Robertson. Hopefully, we'll have it bookable by the start of 2026!

The mentorship program continues to grow, and it has become a real driver for new membership to the club. Since its first winter of 2022, more than 440 members have either volunteered as a

mentor or participated as a mentee. The Winter 2026 cohort met at the Anza with over 100 mentees and mentors attending. This program is a remarkable achievement for the club – envisioned and executed by Shashi Shanbhag and Marie Amonte with the help of 97 Mentors over the years. Each mentee benefits from a minimum of 50 hours of mentor volunteerism (some mentors are over double that!) over the course of the program, spread across 4+ months.

This year saw the creation of the first BCMC Affinity group – the Rainbow Ramblers. The Ramblers connect 2SLGBTQIA+ and allied members via included, respectful and community minded trips. There is much opportunity for similar groups to coalesce in the club. Imagine a seniors group or new immigrant group or ESL group. These other groups will form only through volunteers stepping up.

2025 was the 4th year of the Club operating the Watersprite Lake Recreation Site. Originally set up by Dave Scanlon, he passed the torch this year to Cliff Eschner and Winifred Swatschek, who flawlessly executed on Dave's continuing guidance. The Rec Site is operated at near arms length from the club on a break-even basis with excess revenue returned to the province on demand.

Brian Sheffield continues to mow down alder, maintain trails, flag new routes, build bridges, wrangle volunteers and generally keep all of the access trails to the club's huts accessible. He is a relentless force for trails in the South Coast. If you haven't yet participated in one of his trail maintenance days, I can't recommend them enough.

The club remains very much a part of the Spearhead Hut Society (SHS), who hope to start construction on the second of their three huts in the summer of 2026. Chris Ludwig represents the club's interest on that Society's Board. This year, the club made the largest donation in its history to the SHS to be used towards the construction of the new Macbeth Hut.

Finally, the club continued its collaboration with the Mountain Foundation in 2025, with the two organizations funding the majority of the costs for the new Dreadnought Col trail, that starts at Watersprite Lake and heads up and east to the aforementioned Col. East of the Col is Crawford Creek drainage and from the creek itself, it is a short distance to the northern part of Pinecone Burke Provincial Park. Thank you to Paul Kubik for his efforts in building that new trail in a new way for the BCMC – with a trail building contractor.

We must continue to encourage new members and greater member participation. A number of committees including: climbing, web, trails, social and membership could use your help. The club currently lacks a VIMFF Liaison – for the first time in over 30 years. Why not get more active and participate on one of these committees? Please encourage your friends to join and help support new and less experienced members.

We expanded the expedition grant and hope to encourage more exploratory mountaineering trips.

We also had a successful family camp and will continue to expand trips for families.

Membership Report

Demographics

- Alberta 3
- BC 1,468
- Manitoba 3
- Ontario 3
- Quebec 7
- US 9
- Others 6

Total 1,508

Membership Distribution

- Adult 1,402
- Affiliate 14
- Guest Promotion 26
- Honorary Member 16
- Lifetime 31
- Senior 9
- Youth 10

Total 1,508

Within BC

- Vancouver (Lower Mainland, North Shore) 1,273
- Sea to Sky (Squamish, Whistler, Pemberton) 130
- Vancouver Island (Gulf Islands, Sunshine Coast) 34
- Rest of BC 31

Total 1,468

Cabins, Huts, Trails and Projects Report

Watersprite Cabin Maintenance

Bunk Beds: Dave Percival, Ian McGillivray and Brian Sheffield flew into Watersprite Cabin and installed 5 sets of bunk beds with doubles on the bottom and singles on the top.

Custodian Quarters: We also walled off custodian quarters which provides a locked space for custodians and storage for tools.

Stove: New tubes and baffles were put into the stove and the tiles were glued back in place. Bricks in the stove need to be replaced at some point.

Other items: The floor was painted. Some flashings were caulked where they had been leaking. The screw jack was freed up and tightened. Cliff and Winifred did a great job at cleaning up the basement area and putting away all the left over construction wood. The cabin is very well organized.

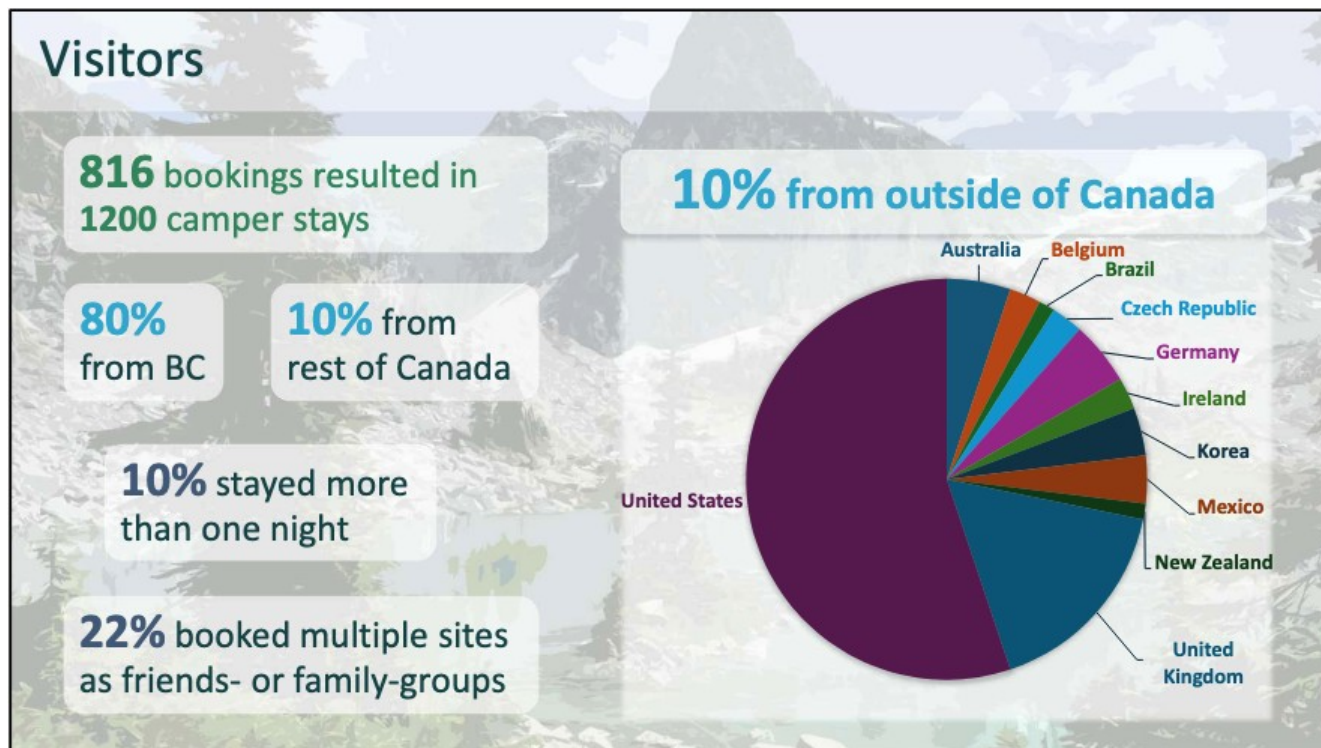
Watersprite Trailwork

- New trail from rec site to Dreadnought Col
- A day was spent cutting trail from the short cut to the lower Demon creek culvert/bridge
- A day was spent cutting trail from the top of the road to just below the upper Demon bridge
- 2 days were spent cutting brush on the winter trail road
- 2 days were spent cutting small trees in the old growth forest area below where the winter and summer trails meet.
- Henry Marsden scouted out a route from Demon Peak to Dreadnought Peak. Henry and Nick S flew in with axe and chainsaw and brushed out this route making Dreadnought a good hike from the Watersprite cabin following Daves trail.
- A day spent cutting the parking lot area

Watersprite Remaining Work

- The cabin outhouse needs to be dug out in the spring.
- Mattresses need to be ordered for the cabin 12 single 27 inch mattresses
- It will be a firewood year next year involving a day of cutting and splitting in the spring and a couple of days of flying and stacking up at the cabin.
- Alder on the upper side of the trail is getting large enough that the snow pushes it across the trail. More cutting is required. Also the first section of the trail up to the top of the short cut needs to be brushed, as does the whole trail
- Demon trail needs to be brushed

Watersprite Recreation Site



Lizzie Cabin and Trail

No work was done this year. From reports it appears that it will need a major brushing next year which will likely take a number of days from both the top and the bottom. Plans are for a trip on BC trails day

Mountain Lake Cabin and Trail

No work was done this year, but from reports it appears that it will need a major brushing next year. Also the road is rapidly growing in and there do not appear to be any plans to brush that out. It is another 4 km and probably beyond what we can do

The trail from the S2S gondola has a class three gully near CoPilot which had some ropes in it, but some of these were lost in a rock slide.

North Creek Cabin and Trail

A work party improved the section of trail above the cabin that was more or less in the creek. Thanks to Wayne who fought his way through the alder to make the new by-pass trail. The trail from the Cabin to the old road was brushed out over two days of cutting. The old road was brushed out over another two day weekend of cutting. The road remains in pretty rough but passable shape, and it does not appear that there are any plans to fix this road.

Norm Deacon Cabin

Dave Scanlon conducted many work trips to get the Deacon hut up and running. His report follows:

History: All of the cabins on Hollyburn are required to have an inspection done every 10 years. Many years ago the Hollyburn Ridge Society hired an engineer who made up a list of requirements needed for inspections. That criteria was accepted by the District of west Vancouver. Those requirements are not the same as required in the city but are specific for the Hollyburn Cabins. We had another 4 work parties at the cabin this year and finally got all of the required work done as listed by the inspection last year.

An inspection was done on October 23d and all was well with the exception of 1 thing. The steel plate in front of the stove on the floor needs to be replaced with a larger piece. We hope to get this rectified within the month and once done the inspection report will be finalized and we will be good for the next 10 years.

The cabin now has porch stairs, porch railing, basement floor replaced, basement door entrance landing built, propane installed for the stove and lights, a new outhouse built, new stove and stovepipe, new chimney, and the guys brought in 2 pickups of firewood.

Sigurd and Rose Trail

The BCMC has a partnership agreement with BC Parks that is administered by Paul Kubik and Andrew Wong. The planned foot bridge is on hold, pending consultation with First Nations. Trail can continue and Henry and Brian spent a day cutting deadfall on the Rose trail. It is currently clear of any deadfall. BC parks did some work on the Sigurd trail as well.

Red Heather Road

A day was spent with 4 volunteers brushing and chain sawing above the waterfall on the Diamond Head Road.

Monument 83 Trail

Some clearing was done on Monument 83 trail with Friends of Manning. It is now clear to KM 8, which should be close enough to Chuwanten Mountain to make it a feasible winter trip.

Another X-C ski bridge was replaced on Fat Dog Trail.

Fat Dog Trail

The BCMC has a volunteers partnership agreement with BC Parks for maintenance of the Fat Dog trail. It is a backcountry ski route from the Cambie Creek parking lot on Highway 3 east of Allison Pass to Buck and Three Brothers mountains.

The club has permission to replace three bridges on the trail that have succumbed to the ravages of time. In 2023, the club replaced the second bridge on the trail at KM 2.7. In 2025, the club replaced the first bridge at KM 2.1. Distances are measured from the parking lot.

The first bridge was less complex. What contributed to the challenge this year was the terrain. Visualize a creek that flows across a 60-degree corner with the ground sloping down on each side. Each approach ramp was inclined and at an angle to the bridge deck. One ramp needed to be 16-feet in length to keep the approach angle shallow as the road dipped steeply from the creek crossing.

Planning and logistics consumed more time than actual construction. The B.C. Mountain Foundation provided most of the capital costs but BC Parks contributed the 23-foot Glulam stringers and flew in a couple of slings of lumber.

Site preparation involved levelling the ground. With two rangers, we were able to build the cribbing, which supports the stringers or beams. The rangers had a couple of ATVs, which were crucial for bringing in the heavy tools to the site.

The next week, Chilliwack Outdoor Club brought in a trail crew and an ATV for two days of work. Their leader, Chris Bukowski used the ATV to pull the 500 lb. stringers up and onto the cribs. Then we bolted the beams together with spacers and tie rods. The beams were anchored to the cribs with the bearing shoes. The shoes were fabricated in Abbotsford by Alder Steel.

With COC, over the two days, we were able to build the 16-foot approach ramp and lay the bridge deck.

In one of those gotcha moments, the plan was for two 8-foot approach ramps but when actually laid out it was realized one needed to be 16 feet. Fortunately, there were two 16-foot 6×6 beams left over from the cribbing but we were now short 8 feet of deck planks. It necessitated another order to the Princeton lumber yard.

BC Parks went out on strike the day they had scheduled to bring in the last batch of decking. Fortunately, Roger Bean of Friends of Manning was able to borrow an ATV and bring in the last load. Snow had already fallen but we were able to get the last bit of deck on and clear the site of debris in time for winter.

Plummer Hut

A guided party stayed at the Plummer Hut over the summer and provided pictures for us to assess its conditions. From the photos, it appears to be in fine shape.

Canada West Mountain School Partnership

By Ian Harris

We're happy to announce a partnership with Canada West Mountain School for the 2025/2026 season! CWMS and the BCMC have a long history of collaboration and we're excited to be bringing you a variety of courses for adventurers of all experience levels over the next year. Keep an eye on the BCMC Trips page for upcoming AST courses offered through Canada West, and discounted access to a variety of other courses available at <https://themountainschool.com/>.



Historic Macbeth Hut Donation

By Greg Hamilton

In August 2025, the club was invited to participate in the Spearhead Huts Society summer camp at the site of the future Macbeth hut. Five club members accepted the Society's offer and did a 5 day trip to the site of the future Hut. The hut will be constructed on the western slopes of Mt. Macbeth, above the headwaters Fitzsimmons Creek, within Garibaldi Park. It will afford hut guests a truly spectacular view of the hanging Fitzsimmons glacier. The hut will be approximately midpoint on the spearhead traverse, which has become the most iconic ski tour in Canada. The route itself was pioneered by Karl Ricker, an honorary BCMC member, and three other VOC'ers in the early 1960s.

At the October social, the club invited the Spearhead Huts Society to give a brief update to membership regarding the fundraising efforts to date, hear about the plan to start hut construction in the Spring of 2026, and to receive a club donation.

The entire budget for the construction of the hut and associated summer trail is expected to exceed \$5 million.

The BCMC has made a donation to the society in the amount of \$40,000, consummate with the club's past donation towards the construction of the Kees and Claire Hut, adjusted for growth in total Club membership since fundraising for that first Hut concluded in 2017/2018 (This is the second donation the club has made to the Macbeth Hut construction, with the first being \$5,000 in 2023 to kick off the fundraising campaign). In return, the club will receive naming rights on all four tables in the common area of the new hut. For those of you that have visited the Kees and Claire Hut, you will know that the hut tables themselves are the focal point of a guests time at the hut, either eating, socializing with other hut guests, planning the next day's activities by pouring over topographical maps, or debriefing from the days ski touring. With the club's donation and

naming rights to the four tables, every single visitor to the Macbeth Hut will see the British Columbia Mountaineering Club's name proudly associated with the hut.

The club already has a strong presence in the Spearhead Hut Society with the BCMC's current VP Chris Ludwig also serving as the VP of SHS and has donated hundreds of volunteer hours to the society. Another club member, Marie Amante, is the chief custodian of the Kees and Claire Hut and also volunteers many many hours to ensure that there is always a hut custodian available for visitors to the hut. Since 2009, Dave Scanlon and David Hughes, both past presidents of the club, have sat on the SHS board and were extremely dedicated to representing the BCMC. Many other club members have volunteered with the Spearhead Hut Society in order to realize this society's vision for the Spearhead. Many of the custodians at the Kees and Claire hut are Club Members.

BCMC members are frequent users of the first hut and the expectation is that we will continue to do so for the second and third huts. There will be an opportunity in 2026 to visit the new hut site again. The society will be looking for a limited number of volunteers to assist with the construction of the new hut, but unlike the Kees and Claire hut, construction will be handled by professionals rather than volunteers.

Spearhead Hut Society Summer Camp BCMC participants: *Cecil Poulin, Meredith Pavlick, Alison Sydor, Jovanna Lord and Greg Hamilton*

For further reading on the Macbeth Hut check out the following links:

<https://spearheadhuts.org/macbeth-hut-the-vision>

<https://spearheadhuts.org/macbeth-hut-animation-tour>

<https://spearheadhuts.org/phase-2-macbeth-hut>

BCMC Financial Report

During the AGM our treasurer, Dave Woodsworth, covered the club's financials and reviewed them with our members. For those of you who were not able to attend or wish to review this information again, you can contact the treasurer directly at treasurer@bcmc.ca or visit the website at: https://bcmc.ca/club_business.php.

BCMC Mentorship Report

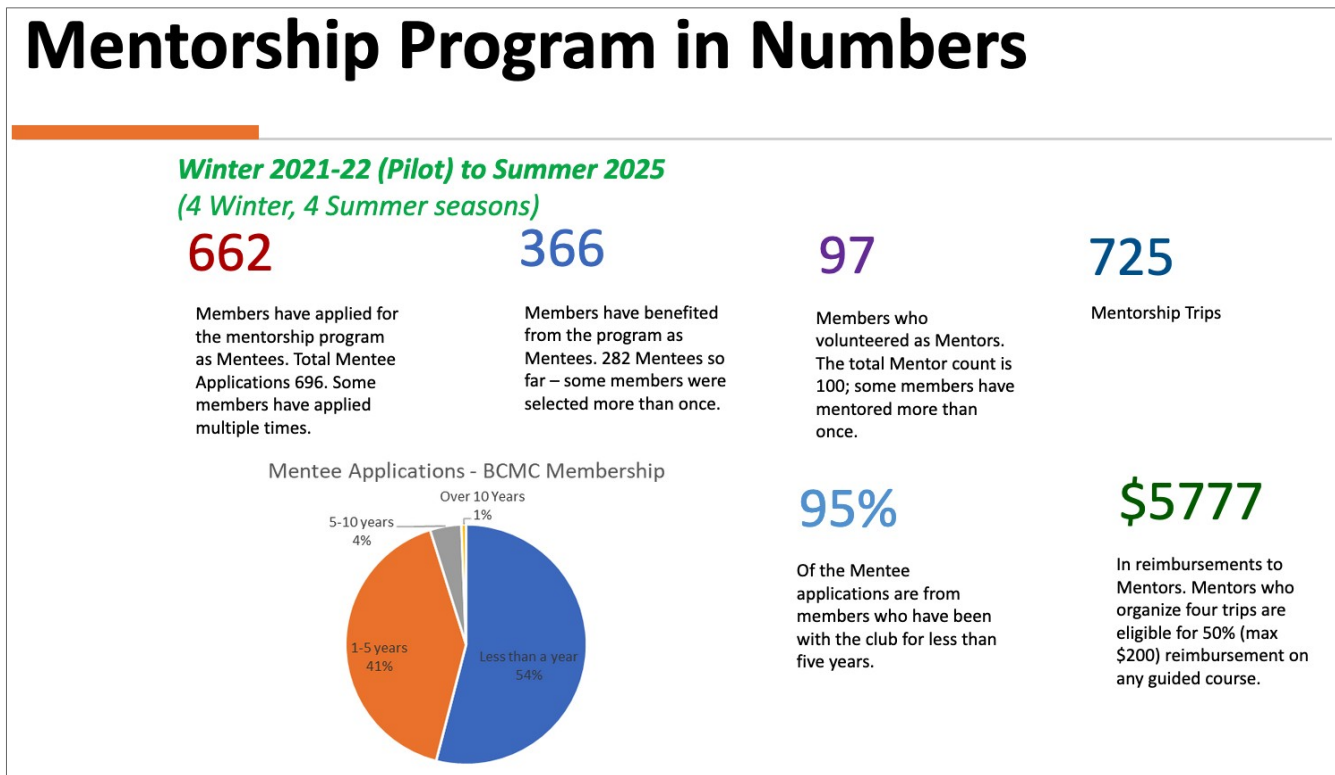
The BCMC continues to see success in both its summer and winter mentorship programs. The 2024-2025 winter cohort saw:

- 121 mentees applied and 87 selected
- 24 mentors applied and 24 selected

A total of **154** mentorship trips were run for the winter season. The summer was just as busy with:

- 157 mentees applied and 70 selected
- 28 mentors applied and 23 selected

A total of **121** mentorship trips were run for the summer season.



Granite App Partnership Announcement

We are excited to announce a new partnership with Granite, a locally developed and owned tech company creating a comprehensive navigation app for handheld devices.



You can check out their platform and download the app for both Android and Apple devices here: <https://getgranite.co>.

Granite offers essential features for modern navigation in both summer and winter, including:

- 3D offline maps
- Detailed layers (slope angle, avalanche slopes, aspect)
- Integrated road status (via backroadstatus.com)
- An online community
- Seamless links with Strava and Garmin Connect

Granite utilizes local experts, including the BCMC, for suggested routes and current condition updates.

Member Benefits:

- Three-Month Free Trial: Every current BCMC member will receive a three-month Granite Pro membership (an announcement with details will be shared soon).
- Pro Discount Benefit: Free Annual Granite Membership: Club members who qualify for the BCMC pro discount will receive a free annual Granite Pro membership.
- Club Support: The BCMC will receive a 20% contribution for every annual Granite membership purchased by a club member.
- Online Seminar: Granite will be providing the club with an online mapping seminar led by one of their Community Ambassadors.

As this app is still in active development, Granite highly values user feedback. We encourage you to download the app and share your user experience with them.

We believe Granite offers a superior set of features for navigating the Coast Range, and we are proud to support a 100% Canadian-owned company whose team knows our local terrain.

Trip Reports

The editor is in need of more trip reports for future newsletters! Have an old trip you never got around to writing? We want to see it! Submit your reports to editor@bcmc.ca.

Slesse NE Buttress – July 1998

By Mo Lamothe

I met Reinhard Fabische at a BCMC meeting, and we started chatting...enthusiastically...about our adventures and future plans...I believe we talked at a number of meetings and a plan was hatched to climb Slesse via the NE buttress...I had been up the other side and Reinhard had climbed it already before. He said "you go up...left...then right...a hard bit...then easier. That's it."

We should be fine. We'd never even gone for a walk together.

Day 1... After an early morning call to say the forecast looked good, packing quickly and coordinating so we didn't bring too much... weight we had to climb with... off we went... dropping a truck at the base of the descent trail then driving around to the other side of the mountain... we had twin 1/2 ropes, a standard rack, a light bag, a stove and pot to melt snow, a water bottle, long pants and a jacket. Another novel thing were some pieces of chicken wire to lash to our sneakers if the approach was on ice... mini spikes are now super popular but they weren't invented yet.

We started walking, through road trail meadow past some plane wreckage... then up onto a fantastic smooth basin... think skateboard park x a million... no snow except a bit, way at the top under the cliffs. No need for chicken wire. Up quickly... maybe an hour... until we could almost touch the snow then right up onto the ridge conveniently right there... a bit muddy but easy. It was mid afternoon. We were on the ridge!

Rocky and bushy at first, then becoming more aesthetic as we climbed pitch after pitch. I kept asking if we were near the swerves and hard bit... Reinhard said it didn't look quite the same, maybe soon. As dusk approached, we weren't up to the bivi ledge (a flat spot with a snow patch ... the only water source)... so we pushed on... maybe one more pitch... then darkness set in and the headlamp came out... but we only had one and Reinhard said he'd bring it... out it came, and then directly into his mouth!... it was a penlight, lighter than the headlights with remote batteries of the day... and he set off straight up 5.7... under belay... 20' up, I could see the difficulty of this and convinced him to come back down and we'd sleep here... it was flat and big enough without being tied in... but without water. It was beautiful...stars and shooting stars everywhere... I sort of thought that's what it's always like on a sharp ridge (I read later it was an extraordinary celestial show that night). In the middle of the night I was awoken to the clanging of pot on rock and Reinhard said there were big rats around... I didn't say it but thought it might have just been me grinding my teeth, and we both got back to sleep eventually. Later I read another trip report... there are some extraordinary creatures up there!... ready to chew your rope in the middle of the night...

I believe we slept on ours.

Day 2... In the morning light, we simply cleaned the crud out of our eyes and started climbing... we were thirsty. The bivi ledge was just a pitch up and soon we were melting snow and eating. With a full litre each, off we went again. Up up up, and at one point over right to avoid a steep bit 'cause we could reattain the ridge just higher... A little later, Reinhard was struggling a bit... not his usual self... and I suggested I lead the pitch... he always lead the harder pitches as he was a better climber, but I think he had hit a wall... perhaps because he thought he might have to take care of me, the weaker one, and that can be a big stress. It turned out to be glorious. Big blocks, right on the crest, seemingly resting there but not loose. After that, Reinhard was back to his old self rejuvenated by a knowledge I could help out.

It was around now too that we heard some thunderous rockfall below and could see down into the basin as a bunch of ice blocks went tumbling down...right where we'd been yesterday...a dodgy dance was envisioned. It was mid afternoon. Finally we got to the top...!!!... and had a wee rest. I was thinking, as I knew the standard way down already but heard of a more direct straight down rappel line we should try that, you know for a grand finish and some more exploring. So we did. It wasn't long and we found the start ...a bunch of slings, and started down. I believe we were on our second rappel when upon pulling to retrieve it and it got stuck... after multiple jiggles and discussions of climbing up the rope, and not sure what to do, I asked Reinhard what should we do!!... he did have more experience and was older, wiser.

He wisely said "pull harder". So we did pulled as hard as we could, and down it came! After setting up for the next rappel, we looked down only to see darkness, so for the second time, I suggested we stop and start again in the light. This time we were tied to the wall and tucked in tight to avoid the odd rock that might go sailing by...not a great sleep but good enough to lie or sit.

Day 3... Come morning, it turned out to be a short rap to the scree, then trail and we were off down the ridge and then steep trail to the truck. Part way down we bumped into a party coming up ... and I knew the one young tall, quiet guy a little...we had a mutual friend. He was quite enthusiastic, excited with what we had just done... so we talked a little and I liked him instantly... His name was John Millar. More down and then the truck ...and a creek! Did I mention we hadn't had water for quite a while, and it was hot, so without a further thought we stripped off and immersed ourselves face upstream with our mouths open until no longer thirsty. After quenching our thirst, and redressing for the drive out, I couldn't help but see this bulge on Reinhard's chest... I blurted out "what's that"?..." oh that's my pacemaker "... "how does it work "?... "battery". I'm sure my mouth was hanging open for a while longer, but no more questions came out.

Lil'wat Mountain

By David Sutanto

The trailhead is at 1100m, around 7km up the Spetch Creek FSR. The washout has been fixed and the road is in good shape. There was a thin layer of snow on the road towards the end, but no issues in a Tacoma with good tires. Some steep sections that 4x4 was useful for. On the way back a tree had fallen on the FSR at about 0.8km, but we were able to get past by snapping and cutting (with a small hatchet) branches, and lifting the remaining branch over the truck (a saw would get rid of this).

The hike starts by following the Valentine Lake Trail, which had a dusting of snow and a tiny bit of iciness, but also flowing water and a couple of small creeks which were easy to jump across.

Following tracks from H-Steven Song and Kelly Wilson, we left the trail at around 1500m, heading WSW through the forest. Generally the way to go is straight up, we just aimed to find the path of least resistance; wasn't really bushwacky, just light undergrowth and occasional deadfall to jump over.



As the snow got deeper, we put on our snowshoes at around 1650m, which soon became essential as we approached the alpine which had deep soft powder. Once out of the trees the summit came into view and the route is fairly obvious, aiming for a ramp to the right of the top. Up close it's easier than it looks from a distance.



Apart from the communications tower at the summit, there were great 360 degree views, especially of Oleg, Saxifrage, Cassiope and Currie, plus other mountains further away. We could see part of Lillooet Lake through the clouds below us.

Going down, some of us stuck with snowshoes until the trail, while others switched to spikes for the lower part of the descent.

We used snowshoes and poles, some used microspikes, we carried avi gear.

Sootip Peak

By Jonathan Lloyd

Sootip Peak is the highest summit on Soo-Rutherford Divide not far from Pemberton, B.C. With variable weather and low snowpack we decided this would be a tame, fun trip to start the ski season. The route is a beginner friendly ski objective featuring a mellow climb up to the alpine. The summit is flat and wide boasting amazing views of the Joffre group, Garibaldi, Ipsoot glacier, and many other prominent peaks. The skiing was challenging and fun and we even went back for a second lap. Although Sootip is not the biggest mountain, it sure hit the sweet spot for the early winter season!





Join the BCMC!

Get on board with the BC Mountaineering Club! For many, getting outside isn't just about the objective – along the way, you meet incredible folks who share your passion for adventure, challenge, and incredible spaces. If you aren't yet a member of the BCMC, find your community, take part in trips, and even learn new skills by joining today. Head to [the BCMC website](#) for more details and instructions to sign up.

Membership Benefits

- Gain access to over 550 Club Trips and Courses per year
- Learn how to hike, climb, and ski with us
- Find hiking, skiing, or climbing partners via our Partner List
- Meet new friends with similar interests
- Save with discounted bookings for BCMC cabins
- Join other members for the club's monthly socials
- connect on the many website forums
- Stay current through the club's e-news and newsletters
- Become a part of the club's future



If you're interested in a membership with the BCMC, visit our website for full details and a link to sign up.