

# B.C. Mountaineering Club Newsletter



Photo: Mt Baker volcanic activity  
Dave Tucker

January 2012. Vol. 90, No. 1

## EVENING SOCIAL MEETINGS

**NOTICE:** While the ANZA club is undergoing renovations, the social will be held at Van Dusen Gardens from 7:30 pm. Cookies, tea and coffee are provided.

**Tues. 10 Jan** - Researcher Dave Tucker presents on the volcanic history of Mt Baker.

### January Social Location

VanDusen Botanical Garden, the Peggy Gunn Woodland Hall A&B. The hall is in the new visitor centre building located at 5251 Oak Street (37th Ave).

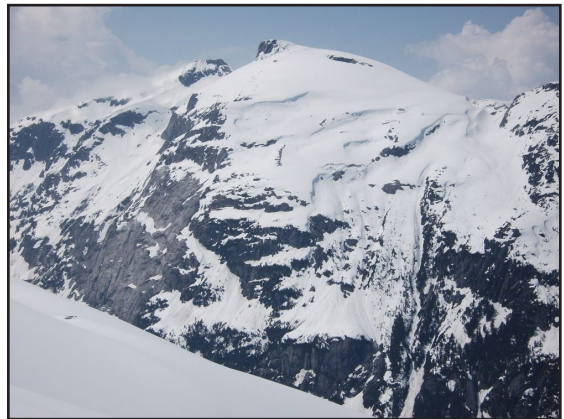


Photo: Mt John Clarke from Outrigger Peak  
Paul Kubik

**British Columbia Mountaineering Club**  
**ADDRESS: P.O. Box 2674**  
**Vancouver, B.C., V6B 3W8**  
**EMAIL: info@bcmc.ca; NET: www.bcmc.ca**

**HONOURARY PRESIDENTS**  
*Esther and Martin Kafer*

**EXECUTIVE COMMITTEE AND OFFICERS**

<b>PRESIDENT:</b>	ALENA DZUJKOVA	778-881-5642
<b>PAST-PRESIDENT:</b>	DAVE SCANLON	604-531-5025
<b>VICE-PRESIDENT:</b>	FRANCIS ST PIERRE	604-224-0502
<b>SECRETARY:</b>	GEOFF ZENGER	778-228-2392
<b>TREASURER:</b>	JEFF ROSS	604-736-1667
<b>MEMBERSHIP (CO-CHAIRS):</b>	WERNER GRZIMEK DON MONTRICHARD	604-737-1091 604-732-8431
<b>SOCIALS:</b>	PETER GUMPLINGER	604-733-8264
<b>CLIMBING:</b>	DAN CAREY	604 731-4048
<b>CABIN/TRAILS:</b>	EMANUELE PORRA	604-533-7723
<b>CONSERVATION:</b>	LISA QUATTROCCHI	
<b>PROGRAMS &amp; CAMPS:</b>	WALDEMAR JONSSON	
<b>FMCBC REP:</b>	FRANCIS ST PIERRE	604-224-0502
<b>WEBMASTER:</b>	PAUL OLYNEK	604-687-3355
<b>EDITOR - NEWSLETTER:</b>	BRITTANY ZENGER	778-228-2392
<b>EDITOR - ARCHIVIST:</b>	MICHAEL FELLER	604-270-4050
<b>SAFETY EQUIPMENT:</b>	KIT GRIFFIN	604-736-8462
<b>SATELLITE PHONE:</b>	PETER GUMPLINGER	604-733-8264
<b>LIBRARY:</b>	JOAN FORD	604-876-4255

**CLUB EQUIPMENT FOR HIRE**

**Avalanche transceivers** - First day - \$5 per day for members, \$7 for non-members then \$3 per subsequent day .

**Snow shovels** - \$3 per day.

**Avalanche probes** - \$3 per day.

**VHF radios** - \$8 per day, \$40 per week

**Satellite phone** - \$60 per week or \$10 per day plus \$300 refundable deposit, all payable in advance, then \$2 per minute use.

If the phone is returned damaged, the renter will be responsible for repair costs. If the phone is lost or damaged beyond repair, the renter will be responsible for reimbursing the club the \$2000 cost of the phone. Trip organizers should request a deposit from trip participants to cover this cost.

First priority for equipment rental is club camps and trips. For rentals, email info@bcmc.ca or contact Kit Griffin (604-313-7282) or Peter Gumpfinger (604-733-8264). At least 2 days notice should be given prior to the day the equipment is wanted, except for the satellite phone, which should be arranged at least 2 weeks in advance.

The **BC MOUNTAINEERING CLUB NEWSLETTER** is an official publication of the B.C. Mountaineering Club and is published 10 times per year (every month except July and August). All material within this newsletter is copyright © British Columbia Mountaineering Club.

**Submissions** - of any written, drawn, or photographic material relevant to the B.C. Mountaineering Club are welcome. If possible, submissions should be sent to the editor by email. Please note that images should be at least 60 pixels/cm (150 pixels/inch) for successful printing. Images with a lesser resolution will probably not be printed. Deadline for submissions is the first Tuesday of the month preceding the publication month.

Send submissions to: [editor@bcmc.ca](mailto:editor@bcmc.ca)

Members may upload articles, photos etc. for the editor at: <http://bcmc.ca/members/EditorUpload.asp>

**Editorial policy** - All submitted written material relevant to the B.C. Mountaineering Club will be published unless the club executive decides otherwise. Submitted material may be edited for clarity or brevity, or for consistency with club policies.

**Opinions and comments expressed in this newsletter are not necessarily those of the B.C. Mountaineering Club.**

**Scheduled trips**

Participation on club trips is open to any person with adequate skills and experience, subject to the approval of the trip organizer. All non-member participants must sign a disclosure and waiver form relieving the club and all other participants on the trip from any liability. A trip organizer is not a certified guide. The function of the organizer is to organize the trip, ensure that it gets underway, know the access to the area, and know a route or routes on the climb. It is expected that each person on a club trip has the necessary skills, experience, fitness, and equipment. The organizer may specify certain equipment mandatory for participation in a trip. Any person who attempts to participate in a club trip without such mandatory equipment may be requested to withdraw. Each person on a club trip is responsible for his or her own safety and for checking the equipment used. Please be considerate and call the trip organizer more than 1 day prior to the trip.

If you are given a ride, please remember to pay the driver your portion of the car costs. If you decide not to go on a trip for which you have previously registered, please be courteous and inform the trip organizer.

## TRIP SCHEDULE ~ Check for updates and details at [www.bcmc.ca](http://www.bcmc.ca)

All trips are skiing unless otherwise noted

### January 2011 Trips

5	Thursday Evening Skiing at Cypress Mountain	Paul Olynek	604-928-3355
7	Cayoosh Mountain (C3)	Stanislav Liarsky	604-983-4476
7	Ice Climbing (Pemberton Area) (WI3-WI4)	Darrin Fast	
7-8	Duffey Lake Road Ice Climbing (B5)	Don Montrichard	604 785 5214
12	Thursday Evening Skiing at Cypress Mountain	Paul Olynek	604-928-3355
14	Paul Ridge - Beginners Welcome - FULL (B2)	Will Cleveland	604-910-4692
14	Harvey Basin (B3)	Thomas Schroeder	
14	Mt Taylor (C3)	Geoffrey Zenger	
14-15	Widowmaker's Arete Reversed (C5)	Serguei Okountsev	
14-16	Lilloett Ice Climbing - Beginner/Mod (WI2-4)	Werner Grzimek	
15	Phalanx Mtn (B3)	Geoffrey Zenger	
19	Thursday Evening Skiing at Cypress Mountain	Paul Olynek	604-928-3355
19	Beginner tele-clinic on Cypress	Isabel Budke	
21	Mt. Tszil (C3)	Don Montrichard	
21-22	Ice Climbing Weekend (WI3-5)	Adrian Lazar	
22	Ptarmigan Ridge (B2)	Kathy Nemis	604-254-1170
22	Needle and Flatiron (B3)	Randy Enomoto	604-224-6184
26	Thursday Evening Skiing at Cypress Mountain	Paul Olynek	604-928-3355
27-29	Tetrahedron Provincial Park (B3)	Thomas Schroeder	
28	Tszil or Taylor/Joffre Lakes area (C3)	Stanislav Liarsky	604-983-4476
28	Gin Peak (B2)	Jeff Ross	
28	Peaks near Poland Lake (D2) - Snowshoe	Alastair Ferries	604-329-1637
28-29	Bridge River Ice Climbing (B5)	Don Montrichard	
29	Needle Peak or Zoa Peak (B2/3)	Carol MacMillan	

### January 2011 Programs and Instructional Days

7	Introduction to Backcountry Skiing - FULL	BCMC Programs	604-731-4048
14-15	AST-1 (Avalanche Skills Training) - FULL	BCMC Programs	
21	Systems for Mountaineering: Avalanche: Terrain	Justin Bennett	604-813-4666
21	Introduction to Backcountry Skiing - FULL	BCMC Programs	604-731-4048
22	Introduction to Backcountry Skiing (B2)	BCMC Programs	604-736-1667
28-29	AST-1 (Avalanche Skills Training) - FULL	BCMC Programs	

## NEWS AND NOTICES

### New Members

The club welcomes the following new members: Holly Arthur, Steve Bell-Irving, Charles Boucher, Megan Dixon, Sharif Entezari, Mike Gudaitis, Nana Hashimoto, Karen Hemmingson, Matthias Lindhuber, Patrick Long, Pardeep Longia, Lise Loubert, Nancy Manning, Tricia Marcotte, Frederic Masse, Beth Mercer, James Messel, Shu Oshika, Lena Rowat, Kate Schendel, Mary Sharkey, Oliver Stevens, Jim Tivy, and Carrick Woodfield.

## New Recreation and Conservation Chair

*Alena Dzujkova*

I would like to welcome Lisa Quattrocchi to the team. Lisa has accepted the role of the BCMC Rec & Con chair and will be closely working with Monika Bittel and Brian Wood, learning the ropes.

Lisa, thank you for stepping up, your enthusiasm and energy is great, hope you'll enjoy the experience.

### Jim Craig - In Memoriam

*Martin Kafer*



**PAUL PLUMMER giving first aid to JIM after the accident on METACARPUS - FALLS R. camp - July 1964**

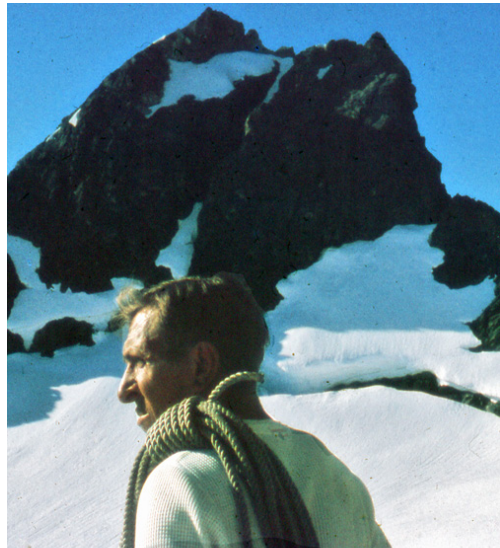
were therefore named after his misfortune and that name is now official.

Jim's most memorable first ascent probably was Mt. Kennedy in the Yukon in the summer of 1965, when he, as the official Canadian presence, joined Robert Kennedy and a US climbing party commemorating the US president, John Kennedy, who had been assassinated in 1963.

Jim not only participated in many club trips, both summer and winter, but he was often organizer and leader. He served on many club committees, such as camps, climbing, trails and access, and he was club President/Past President in 1977/78.

Jim Craig joined the BCMC in 1964, but he had already been a very active and ambitious climber for years, e.g. in 1961 he teamed up with Jack Bryan in an epic traverse of the Cheam range, from Foley to Cheam Pk. That same year he was a member of our private BCMC/ACC trip to Lake Lovelywater when we tried to do as many new routes as possible in a week, such as the E-ridge of Alpha and the traverse of the Ionia N-face and Pandareus Mtn.

In summer 1962 Jim was on my rope to the summit tower of Mt. Waddington, when we made the first successful ascent by a BCMC party, together with Paul Binkert and Esther. In 1964, during the club camp at Falls River, he had the bad luck to crack his hand due to a fall on the descent from "Metacarpus" peaks.. The two peaks he climbed that day with Barry Hagen



**JIM CRAIG below the RED TUSK - JULY 1961**

As a practising lawyer he chaired the 1976 committee charged with rewriting the club constitution. In March 1999 Jim was appointed an Honorary member by the executive and to quote the Newsletter of that month: "...He has also provided the club with legal advice on many occasions, recently helping to draft up our first liability waiver. For these services he was made the club's "honorary solicitor" in June 1983."

In the later years he continued his interest in the club and the mountains; I remember seeing him at many club meetings and other social functions and he made regular day and often longer visits to his beloved log cabin on Hollyburn Mountain.

## **Spearhead Huts Soiree - A Complete Success!**

### *Spearhead Huts Committee*

Without a doubt, the Spearhead Soiree was a complete success! Everyone had a wonderful time... with about 200 people attending, including special guests from BC Parks, Whistler-Blackcomb, members of the media, numerous clubs and outdoor companies. The Performance Works venue worked wonderfully... dressed up in elegant black with the sparkle of candle lanterns and magical light patterns thrown across the floor from three climbing rope sculptures. People mixed and mingled as jazz music set the tone and volunteers brought trays of tasty appetizers round. There were plenty of things to see.... an extensive display on the huts project and Chad Manley's amazing model of the Spearhead Range, plus the silent auction, filled with paintings, photography, outdoor gear, books, guided trips and more.

With people settled in their seats, Master of Ceremonies, Michael Down, introduced the presenters: Jayson Faulkner gave a very engaging presentation on the vision of the Spearhead Huts Project. Liz Scremin honoured ACC'ers, Fips Broda and Ron Royston, on the occasion of the 50th birthday of the Tantalus Hut at Lake Lovely Water. Greg Hill regaled everyone with tales of his formative years skiing in the Spearhead Range and his feat of skiing 2 million vertical feet in 2010. Lastly BC Parks was honoured with a birthday cake in celebration of its 100th birthday.

What a wonderful start to Vancouver fundraising for the Spearhead Huts Project! The Spearhead Soiree will be an annual event until the huts are realized, so please consider attending next year!

---

Many members of the Spearhead Huts Committee and their special guests were in attendance and gave support:

Alena Dzujkova (President) and David Hughes from the British Columbia Mountaineering Club

Karen Newby, Jamie Bond, Andre Charland plus Mark and Susan Dixon from the Kees and Claire Memorial Hut Society

Damian Cromwell from the Brett Carlson Memorial Group

David Toole (Past-President) from the Alpine Club of Canada

Mitch Sulkers (Chair), Jayson Faulkner, Brigitte Mah and Steven Boorne from the Alpine Club of

Canada – Whistler Section

Rob Brusse (Chair), Colin Boyd and Liz Scremin from the Alpine Club of Canada – Vancouver Section

Chris Lawrence from the Association of Canadian Mountain Guides

---

The Spearhead Huts Committee sends special thanks to the following generous individuals and companies:

Our Soiree Sponsors:

Arc'teryx, Arva, Whistler-Blackcomb

Our Beverage and Silent Auction Donors:

Alpine Club of Canada, Altus Mountain Guides, Arc'teryx, Arva, John Baldwin, BC Mountaineering Club, Black Diamond, Glen Boles, Jack Christie, James Elton, Escape Route, Explore Magazine, Indigo Natural Products, Greg Hill, Kathryn Hluchy, Icebreaker, Liberty Wine Merchants, Mountain Equipment Co-op, Petzl, Red Truck, Scarpa, Starbucks, Tamiko Suzuki, Jilly Watson, Rich Wheeler, John Yardley-Jones, Ziptrek

Our Supporters:

Baumann Engineering, Bennett Land Surveying, Howe Sound Inn & Brewing Company, Keltie Computing, Mountain Life Magazine, Oldrich Ungr P.Eng.

Our Volunteers who made the Soiree happen:

Rob Brusse (Fundraising Committee Chair), Colin Boyd, Michael Down, Jayson Faulkner, Fleurie Hunter, Steve Legault, Chad Manley, Barbara McGeough, Liz Scremin, plus dozens of others on the night

## **Outrigger Peak - First Ski Descent**

*Paul Kubik*

I led a BCMC party on the first ski ascent of Outrigger Peak, 4 km southeast of Mount John Clarke. Great trip, long drive. Seven hours, 1400 meters elevation gain. Not sure of the distance but must be around seven kilometres.

Participants: Javier Garcia, Giovanni Ghigliotti, Sylvain Rubenthaler, Matt Hall, Patrick Rault, Alixis Guigee, Michele Cohen, Michael Peterman, Stephen France, Lena Rowat, Blair Mitten, Andrzej Jarzabek, Paul Kubik (leader and reporter, photos).

Roads were in good shape except for Squamish Main - lots of potholes between Mile 21 and 35. Elaho and Sims were in good shape - mostly smooth. G-510 was good - only about six minor cross-

ditches over 5 km. Brush in a couple of spots scraped the undercarriage. Hardly any loose rock and no downed trees. Got stopped by snow at 700 meters, a couple of hundred below the top. One member ended up getting a 2003 VW Golf to 515m on G510 and could have gone a bit further. We took their gear in my Pathfinder and Blair's Tracker and a bunch of people climbed onto the rear bumpers and hung on, just like in the safari movies.

We got delayed over one hour when one of the party climbed a 20 foot waterfall instead of going around it. It was only three or four hundred metres off the logging road. That was the one difficult section. Would have to grade the trip B4 instead of B3 on account of that one measly section in the gully bypassing the waterfall.



A fierce-looking ridge south of Outrigger.  
Photo: Paul Kubik



Outrigger Summit

Photo: Paul Kubik

Descending off the summit ridge back into the gully we approached from.

Photo: Paul Kubik

