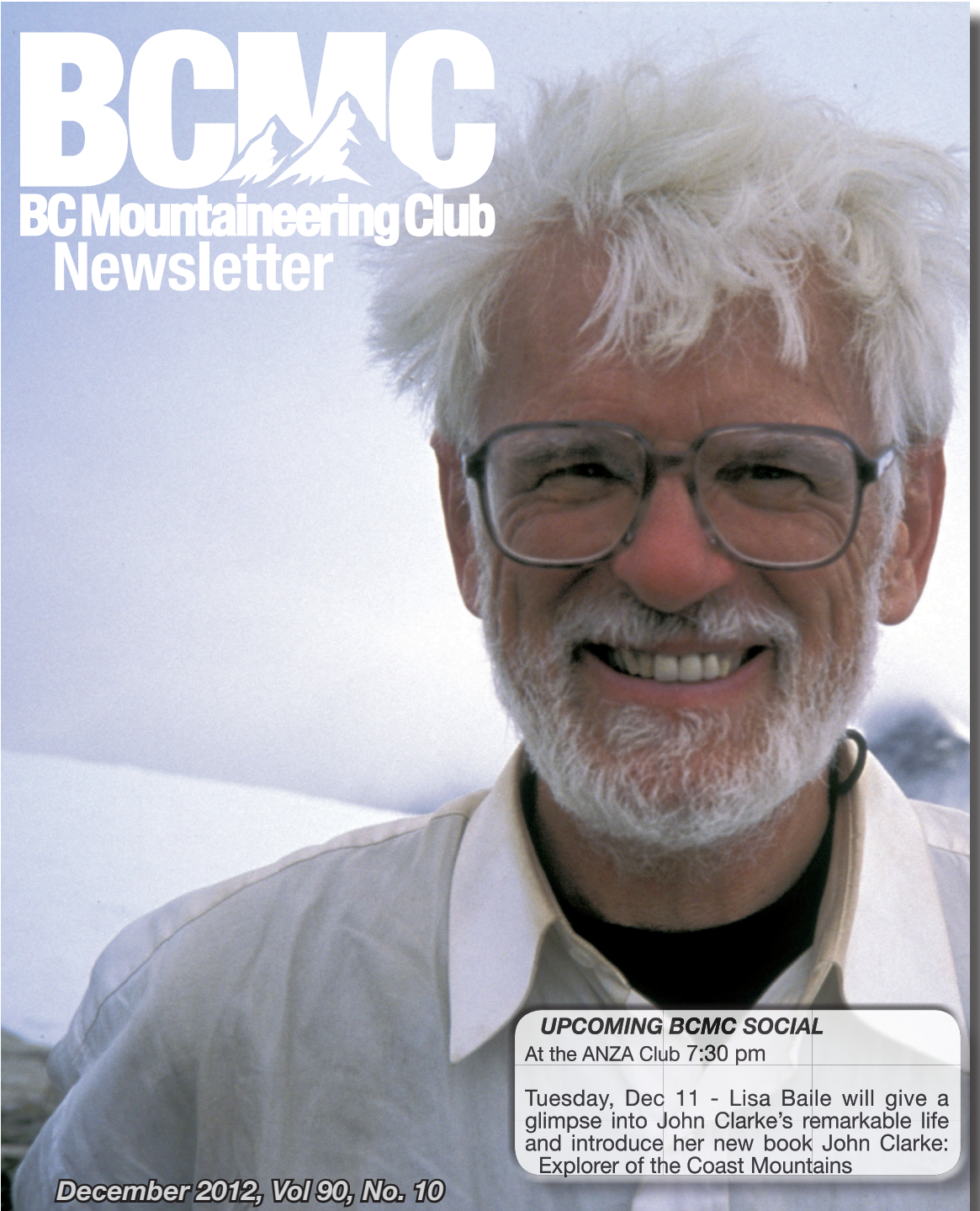


BCMC

BC Mountaineering Club
Newsletter



UPCOMING BCMC SOCIAL

At the ANZA Club 7:30 pm

Tuesday, Dec 11 - Lisa Baile will give a glimpse into John Clarke's remarkable life and introduce her new book John Clarke: Explorer of the Coast Mountains

December 2012, Vol 90, No. 10

British Columbia Mountaineering Club
ADDRESS: P.O. Box 2674
Vancouver, B.C., V6B 3W8
EMAIL: info@bcmc.ca; NET: www.bcmc.ca

HONOURARY PRESIDENTS
Esther and Martin Kafer

EXECUTIVE COMMITTEE AND OFFICERS

PRESIDENT:	FRANCIS ST PIERRE	604-224-0502
PAST-PRESIDENT:	DAVE SCANLON	604-531-5025
VICE-PRESIDENT:	LEE PURVIS	604-308-4993
SECRETARY:	GEOFF ZENGER	778-228-7017
TREASURER:	JEFF ROSS	604-736-1667
MEMBERSHIP	VACANT	
SOCIALS:	VACANT	
CLIMBING:	DON MONTRICHARD	604 732 8431
CABIN/TRAILS:	EMANUELE PORRA	604-533-7723
CONSERVATION:	LISA QUATTROCCHI	778-580-5546
PROGRAMS & CAMPS:	VACANT	
FMCBC REP:	FRANCIS ST PIERRE	604-224-0502
WEBMASTER:	PAUL OLYNEK	604-687-3355
EDITOR - NEWSLETTER:	BRITTANY ZENGER	778-228-2392
EDITOR - ARCHIVIST:	MICHAEL FELLER	604-270-4050
SAFETY EQUIPMENT:	KIT GRIFFIN	604-736-8462
SATELLITE PHONE:	PETER GUMPLINGER	604-733-8264
LIBRARY:	WALDEMAR JONSSON	604-876-4255

CLUB EQUIPMENT FOR HIRE

The club maintains a satellite phone and ice tools, which are available for rental by members only.

Ice Tool - \$5 per day per tool
 Satellite Phone - \$60/week; \$10 per day + \$2 per minute used

Fees are non-refundable and payable in advance and a refundable deposit may be required, at the equipment custodian's discretion. Instructional Programs are exempt from rental fees, all other uses are subject to the rental fees.

The satellite phone is rented from Peter Gumplinger (604-733-8264), who should be contacted at least 3 weeks prior to the day it is wanted.

Ice climbing axes are rented from Werner Grzimek.

The **BC MOUNTAINEERING CLUB NEWSLETTER** is an official publication of the B.C. Mountaineering Club and is published 10 times per year (every month except July and August). All material within this newsletter is copyright © British Columbia Mountaineering Club.

Cover Photo: John Clarke
 Photo: Doug Brown

Submit Your Content:
editor@bcmc.ca

Submissions: We want you to write for us! Any submitted news, events, trip reports, letters relevant to the BCMC will be published unless the club executive decides otherwise.

About Submissions: For photos, high resolution is much appreciated. Submitted material may be edited for clarity or brevity, or for consistency with club policies. Opinions and comments expressed in this newsletter are not necessarily those of the BCMC.

Scheduled trips: How they work

Participation on club trips is open to any person with adequate skills and experience, subject to the approval of the trip organizer. All non-member participants must sign a disclosure and waiver form relieving the club and all other participants on the trip from any liability. A trip organizer is not a certified guide. The function of the organizer is to organize the trip, ensure that it gets underway, know the access to the area, and know a route or routes on the climb. It is expected that each person on a club trip has the necessary skills, experience, fitness, and equipment. The organizer may specify certain equipment mandatory for participation in a trip. Any person who attempts to participate in a club trip without such mandatory equipment may be requested to withdraw. Each person on a club trip is responsible for his or her own safety and for checking the equipment used. Please be considerate and call the trip organizer more than 1 day prior to the trip.

If you are given a ride, please remember to pay the driver your portion of the car costs. If you decide not to go on a trip for which you have previously registered, please be courteous and inform the trip organizer.

TRIP SCHEDULE ~ Sign up, updates and details at www.bcmc.ca

Dec 2012 Trips

1	Paul Ridge - Beginners Welcome - B2	Jeff Ross
1	Mt. Harvey - North Face Ramp - B4	Don Montrichard
1-2	Early Season Powder at Mt Baker - Heliotrope Ridge - C3	Seth Baker
5	Pulling on plastic @ Vancouver Cliffhanger - A5	Diana Diaconu
6	Thursday Night Skiing - Cypress - A2	Peter Malacarne
7-15	Early Ice Climbing Camp in the Rockies/Canmore - WI3 -4	Werner Grzimek
8	Crown Couloir - Mountaineering - C4	Serguei Okountsev
13	Thursday Night Skiing - Cypress - A2	Peter Malacarne
15	Brunswick Mountain - NE Couloir - C4	Serguei Okountsev
15	Hope Mtn - Snowshoeing - C2	Alastair Ferries
15	Zoa Peak - Beginners and Snowshoers Welcome - B2	Jeff Ross
15	Alpen Mountain - Backcountry Skiing - B2	Geoffrey Zenger
24	Mt. Harvey - North Ramp - Mountaineering - C4	Serguei Okountsev
29	Markhor - Needle Traverse - Mountaineering - C4	Serguei Okountsev

NEWS AND NOTICES

New Members

The club welcomes the following new members: Lee Purvis, Charles Blanke, Jonathan Ross, Kyra Huntington, John Grant, Leonard Ma, Jamie Rupar Gilliatt, David MacDonald, Adrian Burke, Lyle Johnson, Jesse Tarbotton, Aimee Sturley, Paul Schrimpf, Gail Goodfellow, Tara Laycock, and Natelle Fitzgerald.

Getting ready for the winter season

As the days grow shorter and we prepare for the first powder runs of the new season, we're looking for volunteers to lead winter trips for the BCMC. Every pursuit is welcome: rock climbing in the desert, snowshoeing, backcountry skiing, ice climbing, or big mountaineering objectives. Please see the trip schedule on the website for details on how to add a trip.

New BCMC Website is Now Live

We've taken the plunge and moved onto a whole new platform for the website, chock full of new features, such as improved trip list sign-up, new forum features, news feeds, and much more. Check it out at: www.bcmc.ca. Your user name and password remain unchanged from your existing profile from the old site. Please bear with us, as there may be hiccups along the way. If you have specific concerns with the new site, please contact our dedicated webmaster, Paul Olynek at webmaster@bcmc.ca.

BCMC 2013 Executive Elected

The BCMC executive was elected at the AGM, held at the November social. Welcome back to Don

Montrichard who is rejoining the Executive as Climbing chair and a first time welcome to Lee Purvis, new to the executive and joining as Vice President. We still have three vacancies: Membership, Socials and Programs & Camps. Please speak with a member of the executive to learn more about volunteering for one of the open positions, if you're interested.

Future Mountaineer?

Welcome Helena Jonsson to the world, born November 20th at a healthy 54cm and 4.2kg. Congratulations to Waldemar, just retired from the executive and current custodian of the BCMC library, and Joni on their firstborn!

Wild Country Ropeman 3 Recalled

If you own a Ropeman 3, take a look at the recall issued on October 29, 2012 at: <http://www.rockandice.com/news/2326-safety-notice-wild-country-ropeman-3-recalled>

Socials Chair -2012 Annual Report - Peter Gumplinger

A big thank you to all of our presenters for 2012, we had a great line-up of interesting presentations ranging from aerial photography to big expeditions. Your presentations make the socials entertaining and engaging.

Dec '11: John Scurlock (pilot/arial photographer) - "Mountain Aerial Photography"

Jan '12: Dave Tucker (MSc Geology) - "The Volcanic History of Mt. Baker"

Feb '12: Alex Gibbs - "Steep Skiing Classics in the Sea to Sky"

Mar '12: Marcus Dell/Mike Thompson - "Spring Ski Traverse from Blackcomb to Pitt Lake by the Misty Icefield"

Apr '12: Adam Palmer - "Expedition to the Stave Glacier"

May '12: David Crerar - "The Bagger Challenge"

Jun '12: Marek Labecki - "Mt. Judge Howay" and Alastair Ferries - "A Mountain Quiz"

Sep '12: Simon Whitehead - "Cycling Solo through South America"

Oct '12: Jenn Burt - "Forever Wild: A Presentation on National Parks"

Nov '12: Dave Hughes - "The Current Status of the Spearhead Huts Proposal"

I have confirmed engagements by:

Dec '12: Lisa Baile - "John Clarke: Explorer of the Coast Mountains"

Jan '13: Cathy Ross - "The Garibaldi History Project"

2012 Climbing Chair Report – Dan Carey

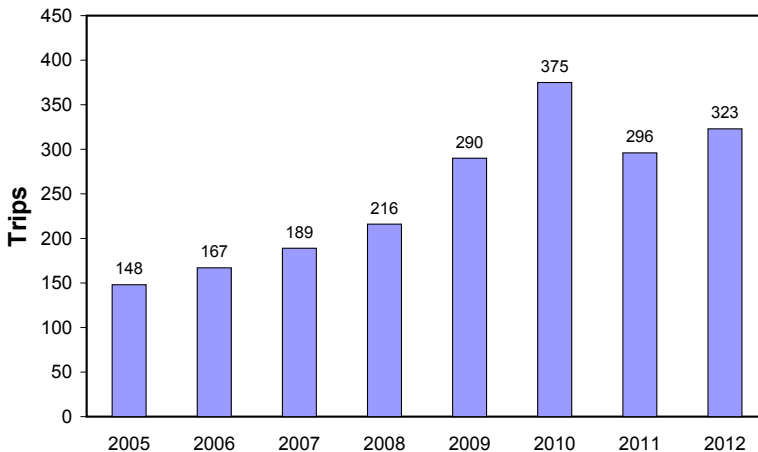
The role of the Climbing Chair is to make sure that we have a full trip schedule. 2012 was another very successful year for the number of trips. A total of 323 trips went onto the schedule, up from 296 in 2011. Looking back a little further, the number of trips is up 50% from just four years ago. Of course not all of these trips actually happened due to weather and other things. About 79% of trips that went onto the schedule actually happened, up slightly from 2011. The mix of trips continues to change from year to year, often without an easy explanation. In 2012, the number of ice climbing, mountaineering and skiing trips were up compared to the previous year, while hiking, rock climbing and gym climbing trips were down.

One of the major ways members can make a contribution to the club is to organize a trip. And this year, 72 did that, down slightly from 73 in 2011. We have some extremely motivated trip leaders. In fact, half of all the trips on the 2012 schedule were organized by just eleven leaders. These eleven were Adrian Lazar, Serguei Okountsev, Stanislav Liarsky, Justin Bennett, Don Montrichard, Alastair Ferries, Brad Percival, Matt Mussallem, Jeff Ross, Geoffrey Zenger, and Werner Grzimek. In addition to all of the trip leaders, I would like to thank our webmaster, Paul Olynek, for all of his behind the scenes work that makes our website trip schedule possible.

It also helps to have members on a climbing committee who assist the Climbing Chair by recruiting trip leaders for a particular type of trip or with anything else that needs doing. The members of the climbing committee were Werner Grzimek (ice climbing), Michael Lim (gym climbing), Paul Ng (rock climbing), Chloe Tergiman (rock climbing), and Radmila Bridges. Despite several appeals for help, no one came forward to recruit leaders for hiking, mountaineering or snowshoeing.

Being your Climbing Chair has been a lot of work. I remain grateful for all of the leaders that have stepped up to make 2012 another successful year. As I turn over the position to a Climbing Chair, I look forward to the new ideas and dedication that the new executive will bring.
See you in the mountains.

The BCMC Trip Schedule Remains Strong



2012 Recreation and Conservation Chair Report - Lisa Quattrocchi

In the past year, the FMCBC Southwest Recreation and Conservation committee has worked to:

- * Push for enforcement of the 21 Mile Creek/Rainbow non-motorized zone in which snowmobiles regularly trespass

- * Object to the procedural shortfalls of Sea to Sky Gondola Proposal where park boundary adjustment procedures were circumvented
- * Lobby for a bridge over Fitzsimmon Creek to facilitate access to Singing Pass trail
- * Resolve parking issues in North Shore Provincial Parks where non-paying back country users are restricted from parking on a first-come basis
- * Oppose the Madeley Lake “high line” trail as it was unnecessarily wide and passed through old growth forest which would require extensive cutting
- * Reduce user fees for backcountry skiers at Whistler Olympic Park and Callaghan Country as they were originally having to pay the same rates as Nordic track skiers while barely using the tracks
- * Provide input to the Garibaldi Provincial Park Master Plan which is being amended due to the increasing pressure from many users in the Spearhead area
- * Settle issues in the Tricouni Unresolved Area so that back country users, such as those accessing the VOC Brew Hut, can recreate with out conflict

Additionally, monthly meetings have featured the following special guests:

Brandin Schulz, BC Parks Southwest Regional Manager

Alistair McCrone, from the Ministry of Forests, Lands, and Natural Resource Operations

Anders Ourum, BCMC member concerned with the Sea to Sky Gondola Proposal

Some of the most active and knowledgeable people on the committee are BCMC members Monika Bittel, Brian Woods, Scott Nelson, and Michael Feller. The executive commends their dedication as advocates for the environment and for non-motorized backcountry users.

Membership Report 2012: A New Record Year for Membership! Werner Grzimek, Membership Chair 2012

2012 was the best membership year the BCMC ever had in its 105 years history: We had 561 Members in total and generated a record high in total membership fees of \$ 22,699 (+16%) thanks to additional Life-Memberships we sold.

Membership administration in 2012 was again supported in 2012 by Silvia Bakovic and Kevin Swanson. Thank you for all your work. We all owe a special Thank You to Steve Tate (Membership Assistant) who spends endless hours keeping your membership administration in very good shape since so many years.

A) Historical membership development: I went through our Newsletters 42 years back to 1970. It was a long way from 286 Members the club had in 1970 to 333 in 1980, 370 in 1990, 529 in 2000, and 517 in 2010. (See Graph)

The previous record year was 10 years ago in 2002 with 553 members.

After 2002 the club was (likely) hit with the free internet-based competition and we lost during the following 5 years about 1/4 of our members - down to 418 members in 2007. The turn-around was in 2008, gathered steam in 2009 and particularly in 2010 - supported by a hugely improved trip calendar (thanks to Radmila Bridges and Dan Carey) and thanks to our sign-up option via the internet which Francis St. Pierre started in 2010. Our course

programs also helped to increase membership.

Last year, under the guidance of Hugh Kellas (past Membership Chair) we implemented a new membership-fee concept, changing fees for paper/electronic members and for about 130 couple members whose formerly discounted rate was eliminated.

So everybody was a bit anxious to find out what will happen with our membership numbers. I knew that at times we changed membership fees in the past –we usually lost members (-28 in 1990 and -87 in 2003)

B) Reporting on 2012: Starting as Membership Chair after the AGM in November 2011 we were -91 members behind in renewals. We gathered steam by systematically sending out renewal notices to members and by developing our posters which we distributed at 13 promotion points in

1. Squamish at Smoke Bluffs Parking, Smoke Bluffs Kids Zone, Apron Parking, Climb On, Walhalla and at the Galileo Café in Britannia.
2. Lower Mainland at Cliffhanger-Van, Cliffhanger-Coqu, Edge Gym, The Hive Gym, Walhalla, MEC-Van, and MEC-N.Van.
3. The result was that - despite those fee changes - we did not lose members but ended up with a new record number of 561 Members on September 30, 2012.
4. In addition, our renewal drive for the year 2013 shows per mid-November a plus of 69 paying members for 2013. So – we are well set up to break through the 600 membership wall during the current fiscal year!

Some statistics from Membership 2012:

5. How existing Members renew: 71% via PayPal-Electronic, 29% via Paper Forms
6. How new Members sign up: 88% via PayPal-Electronic, 12% via Paper Forms
7. What type of Communications do Members buy: 86% Electronic Newsletter, 14% Paper Newsletter
8. How many Members bought 'multiple-year memberships': For 2012 = 12%, for 2013 = 19% (+58%)
9. Drop-out or quitter rate during first two member-years: 2011= 58%, 2012 = 51% (-12%)

C) Looking Forward – What we could work on:

1. Should we become a more inclusive New-Member-Friendly Club?

I think so. Let's look at our dropout rate. Just remember how easy or difficult it was for many of us to integrate into the BCMC community when we were the Newbies. Let's talk more to and assist our new members at trips and socials. All 'old members' started as new members. Let's give those new BCMC'ers a hand as mentors.

2. Should we become a more transparent club?

I think so. Particularly in our internet driven time secrecy walls should come down and I am an active supporter of the idea to establish

a) The ground rule that everything in our club governance is public. Something like: 'If it is somewhere in our files - you can see it'.

b) Possible exceptions: Those things that must be kept private for legal or business reasons need each time a majority vote of 51 % from the Executive group - accompanied by the

rational reasons for keeping this particular information from member's view. In other words, the burden of proof would be on those wishing to keep things secret.

c) I can't see the reason why we keep our executive proposals and discussions not accessible to our members on numerous hidden pages at the Club-Webpage, at our Forum or on Google Docs.

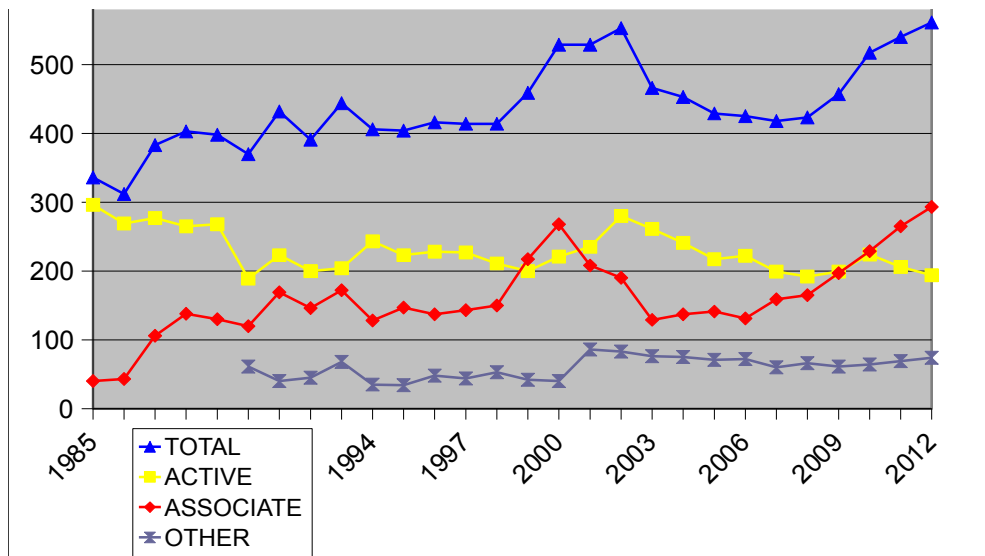
On my club trips I spoke to many members who become very critical and cynical when they suspect secrecy. Specifically our more active members (maybe 1/4 ??) want to know what is being discussed in our 'club government' so they can express their input in a timely fashion.

3. As we are pushing towards 600 members we could start on our web page "Activity Centers" or Networks for Seniors, Youth, Hikers, Snow Shoers, whatever networks our members want to start. Otherwise more members will migrate to those specialty 'Meet-Up' groups on the net such as for senior hikers, gay climbers (one more new Meet-Up group), rock climbers - you name it – our free competition on the web offers it. All those outdoor enthusiasts should find their home at the BCMC.

And lastly – I am very positive for the coming club year. We have a new web page and I think we have a great group of people elected into our Executive 2013.

Let us all volunteer to make the BCMC into the best climbing club in BC and in Canada. □.

Membership Trend



November 7, 2012 Marble Canyon Ice Report (Thanks Garry) Submitted via Lee Purvis

A special thanks to all the climbers that helped clean-up Marble Canyon after the fires!

Highway 99 North – Marble Canyon

A fire swept through the Marble Canyon ice climbing area last summer and created a fair amount of havoc. Burnt trees had collapsed onto 'Icy BC' (1st pitch), Deeping Wall, and 'Shake, Rattle, and Roll'. Numerous anchor trees (on the first tier) had been weakened and their fixed anchor slings melted. As well, the trail up to the top of the first tier had been pretty well obliterated. Since then and thanks to the efforts of the Kamloops and Williams Lake ice climbers, most of these problems have been taken care.

All of the downed trees have been removed and the trail up to the top of the first tier has been recreated and improved. Anchor trees have been tested and have had their fixed slings replaced. In those cases where the anchor trees appeared usable but might have been compromised, the anchor slings have been backed up to other trees on the uphill side. A general cleanup of the top of the first tier was also done and much loose rock and deadfall was removed from above the climbs.

Three climbs still have anchor problems. The anchor trees for 'Dihedral Direct', 'Deeping Wall Right', and 'No Deductible' are all unstable and should not be used. For the time being, people climbing 'Dihedral Direct' should traverse over to the anchor above 'Waite For Spring'. New bolt anchors for the other two climbs will be established once we can determine ice free areas for the bolt placements.

The fire did continue uphill but doesn't appear to have affected the anchor trees for the second or third pitches of Icy BC. There is, however, fire debris in the bowl above pitch 2. The anchor trees for the Top Tier climbs have not been checked and should be treated with caution.

Abstract: Glacier Surveys – 2011 and 2012 by Karl Ricker

In the BCMC Newsletter for January, 2009 and The Mountaineer (2010) the data was looking for a glacial response to the record-setting snowpack of 1998/99. Who can forget the 9 to 10 metres of late spring snow pack on our local mountains which did not disappear until September/October? For Wedgemount, there was a pronounced slow-down in snout recession in 2007, but was that the final answer, or was the 6.4 metres reported in 2010 going to a lesser value in the following years. The data tabled for 2011 and 2012 indicates that 2007 was the response year to the record snowfall. That is, it takes 8 years for a snout response to an abnormal snowfall stored initially in the névé zone. Now the glacier is back to hefty recession, its snout being almost 300 metres up-slope from the lakeshore!

For Overlord the tabled data shows that the response to the big snow year was a 12-13 year time lag providing us with a welcomed advance in 2012 after stalling at no change in 2011. However, the snout is insulated by a thick layer of rock debris. But, our ever inquisitive Brian Wood probed it repeatedly with his trusty ice axe to find the hidden edge of ice. Phew, that was close. Where the ice was exposed, it would have measured out to a few metres of recession. So, Brian can even keep glaciers on the move, despite their masquerading lethargic moods. Well done Brian. You probably found the only glacier in Canada that advanced in 2012! Hurray!

Glacier Status at Terminus – 2011 to 2012

Glacier	2011 Recession (-)	2012 or Advance (+)	Cumulative Recession ca 1900 to 2012***
Wedgemount	(-) 17.3*	(-) 28.6	(-) 1506.7
Overlord	(+/-) 0.0	(+) 1.9	(-) 1344.0 **

Notes:

* The B.C.I.T. GPS survey a day later measured (-) 20.0; the discrepancy remains a mystery.

** The value of 1128.8 for the 2009 year, published in the 2010 Mountaineer, is a typo for 1328.8, and has since been revised to 1344.9 after reviewing the triangulation fix in 1995. That is, for the 1993-1995 period the recession of 31.9 m has been revised to 50.0 metres.

*** The ages of the outermost moraines are inexact: 1880 to 1910 for Wedgemount, and 1875 to 1884 A.D. for Overlord.

Trip Reports

Hope Mountain

Trip Date: October 8, 2012

Participants: Brittany, Nancy, Geoff Zenger (reporter)

Difficulty: 1/2 (one very short class 2 traverse)

Report: Hope Mountain dominates over the south side of the town of Hope, looks impressive, is a short hike (only 2:15 hours from parking to summit), has amazing views, is well described in 103 hikes, and yet sees relatively few ascents. Why is that? Bush. The first 1.5km of this hike is as overgrown and bushy as anything can be while still being called a trail, and is badly in need of being brushed out. Beyond that, however, the trail is in great condition, and the route is very pleasant up the largely open south ridge of the mountain to the summit. The Lower Mainland hiking community would be well served and very grateful if somebody chose to spend a day clearing out the lower trail through

the clearcut.

The road requires a high clearance 4x4, and is in decent shape until the final junction except for a short loose section a bit more than 3km up the road that would challenge a low clearance SUV. Furthermore, the 400m from the last junction to the clearing that serves as the trailhead for both the Hope Mountain and Wells Peak trail is quite overgrown with alder and so you can expect to give your vehicle a thorough alder scrubbing if you choose to drive all the way to the end (we did).

We left the trailhead a bit past 9 o'clock on what was the last nice day of this year's hiking season, and made our way up the badly overgrown trail/road to the ridgeline above the parking area. From here, the trail is in better shape as it follows a road on the backside of the ridge and contours towards Hope Mountain. Where the trail leaves the road, it is badly overgrown again for a short while until the edge of the clearcut is reached, where the trail becomes much more pleasant as it enters a much more mature forest on the ridge south of Hope Mountain. Note that despite being badly overgrown low down, the trail is never hard to follow.

The ascent of the south ridge is pleasant and easier than it looks from below. The trail is in great shape, and except for one short (3m) traverse on an unexposed ledge about half way up requiring the use of hands, it is a straightforward trail hike. We reached the summit around 11:30 in beautiful T-shirt conditions and sat down a short ways away from the communications structures on the summit to enjoy the fantastic views all around.

We lounged on the summit for a full hour before starting our descent. The trip down was quick and uneventful, and we were down at the car just past 2 o'clock, 5 hours from when we started. A couple days after this trip, the Vancouver weather turned sour, and so this was a great trip to cap off this year's hiking season.



Silver Lake and Bluffs as viewed from the summit of Hope Mountain.
Photo: Geoff Zenger



Above: Werner Grzimek showing off his great new BCMC display at the MEC SnowFest (Right: Detail)

Below: John Clarke (Photo: S. Briggs)

