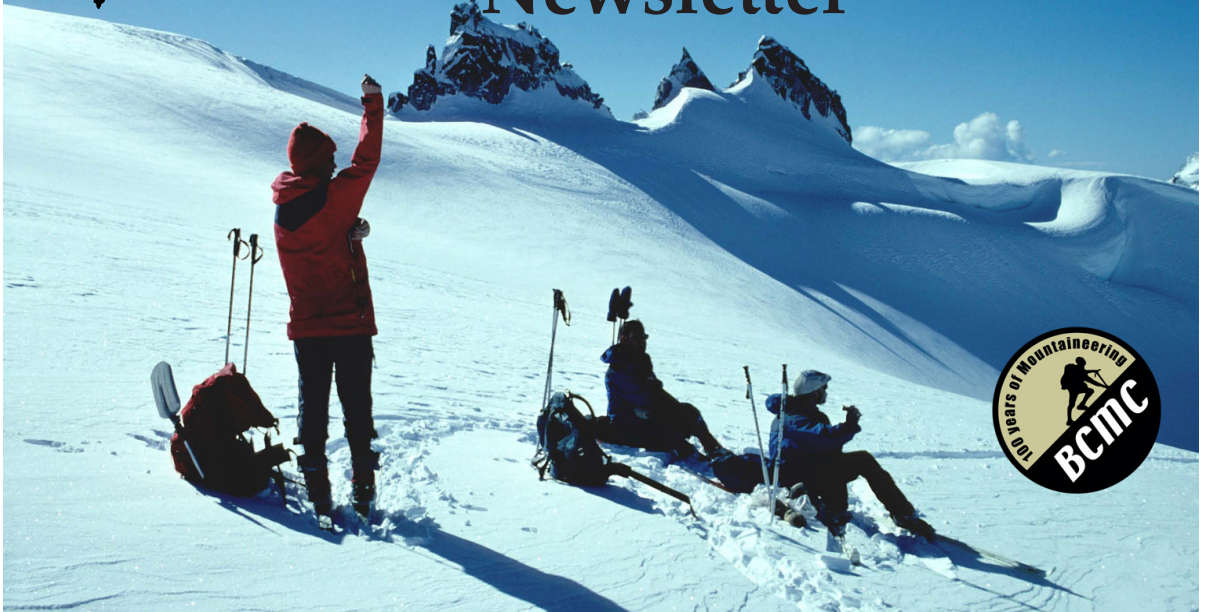




# B.C. Mountaineering Club Newsletter



Skiers resting beneath the Bookworms, Garibaldi Park.

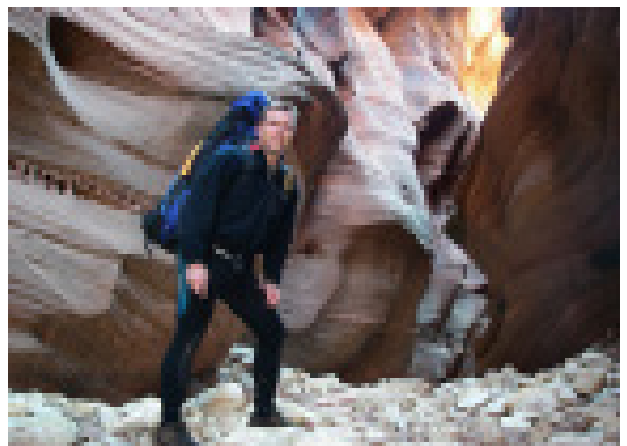
**May, 2007. Vol. 85, No. 5**

## **EVENING SOCIAL MEETINGS**

Evening socials are usually held in the ANZA club, upstairs room (corner of 8th Ave. and Ontario, Vancouver) starting at 7:30 p.m. Cookies, tea, and coffee are provided.

**Tuesday, 8 May** - Entertainment will be a slide show on a 70 km solo hike from southern Utah to northern Arizona ending at the Grand Canyon, by Kevin Swanson.

**Tuesday, 5 June** - Entertainment will be a show by Todd Ponzini featuring 100 years of photos from the club archives



Kevin in Utah's Buckskin Gulch, the longest slot canyon in the world. Photo - K. Swanson

## HONORARY PRESIDENTS

Esther and Martin Kafer

## EXECUTIVE COMMITTEE AND CLUB OFFICERS

<b>PRESIDENT -</b>	DAVE HUGHES	604-980-6484
<b>PAST-PRESIDENT -</b>	KIT GRIFFIN	604-736-8462
<b>VICE-PRESIDENT -</b>	TODD PONZINI	604-408-9617
<b>SECRETARY -</b>	ALICE PURDEY	604-293-2951
	JANE WELLER	604-988-3618
<b>TREASURER -</b>	TODD PONZINI	604-408-9617
<b>MEMBERSHIP/MAILING -</b>		
	DERRICK JOHNSTONE	604-505-6250
	PAUL HAWMAN	604-924-1235
<b>SOCIALS -</b>	DONNA SCANLON	604-572-5051
	ROBERT WOODHOUSE	604-730-0371
<b>CLIMBING -</b>	JOS VAN DER BURG	604-463-7582
	EMANUELE PORRA	604-533-7723
<b>CABIN/TRAILS -</b>	DAVID SCANLON	604-572-5051
	PETER WOODSWORTH	604-254-7076
<b>CONSERVATION -</b>	MONIKA BITTEL	604-983-3097
<b>SUMMER CAMP -</b>		
	PETER WOODSWORTH	604-254-7076
<b>FMCBC REP -</b>	BRIAN WOOD	604-222-1541
<b>WEBMASTER -</b>	KEVIN SWANSON	604-943-4364
<b>EDITOR -</b>	MICHAEL FELLER	604-270-4050
-----		
<b>EQUIPMENT -</b>	PAUL KUBIK	604-876-0764
<b>SAFETY EQUIPMENT -</b>	KIT GRIFFIN	604-736-8462
<b>LIBRARY -</b>	JOAN FORD	604-876-4255

**ADDRESS: P.O. Box 2674, Vancouver, B.C., V6B 3W8**

**EMAIL ADDRESS: info@bcmc.ca**

**INTERNET SITE: www.bcmc.ca**

## CLUB EQUIPMENT FOR HIRE

**Avalanche transceivers** - First day - \$5 per day for members, \$7 for non-members then \$3 per subsequent day .

**Snow shovels** - \$3 per day.

**Avalanche probes** - \$3 per day.

**VHF radios** - \$8 per day, \$40 per week

**Satellite phone** - \$60 per week or \$10 per day plus \$300 refundable deposit, all payable in advance, then \$2 per minute use.

If the phone is returned damaged, the renter will be responsible for repair costs. If the phone is lost or damaged beyond repair, the renter will be responsible for reimbursing the club the \$2000 cost of the phone. Trip organizers should request a deposit from trip participants to cover this cost.

First priority for equipment rental is club camps and trips.

Equipment is rented from Kit Griffin at 604-736-8462, who should be contacted at least 2 days prior to the day the equipment is wanted, except for the satellite phone, which should be arranged at least 2 weeks prior to the day it is wanted.

The **BC MOUNTAINEERING CLUB NEWSLETTER** is an official publication of the B.C. Mountaineering Club and is published 10 times per year (every month except July and September). All material within this newsletter is copyright © British Columbia Mountaineering Club.

**Submissions** - of any written, drawn, or photographic material relevant to the B.C. Mountaineering Club are welcome. If possible, submissions should be sent to the editor by email or on a diskette. Please note that images should be at least 60 pixels/cm (150 pixels/inch) for successful printing. Images with a lesser resolution will probably not be printed. Deadline for submissions is the first Tuesday of the month preceding the publication month.

Send submissions to Michael Feller (ph. 604-270-4050, email - feller@interchg.ubc.ca).

**Editorial policy** - All submitted written material relevant to the B.C. Mountaineering Club will be published unless the club executive decides otherwise. Submitted material may be edited for clarity or brevity, or for consistency with club policies.

**Opinions and comments expressed in this newsletter are not necessarily those of the B.C. Mountaineering Club.**

## Scheduled trips

Participation on club trips is open to any person with adequate skills and experience, subject to the approval of the trip organizer. All non-member participants must sign a disclosure and waiver form relieving the club and all other participants on the trip from any liability. A trip organizer is not a certified guide. The function of the organizer is to organize the trip, ensure that it gets underway, know the access to the area, and know a route or routes on the climb. It is expected that each person on a club trip has the necessary skills, experience, fitness, and equipment. The organizer may specify certain equipment mandatory for participation in a trip. Any person who attempts to participate in a club trip without such mandatory equipment, may be requested to withdraw from the trip. Each person on a club trip is responsible for his or her own safety and for checking the equipment used. Please be considerate and call the trip organizer more than 1 day prior to the trip. If you are given a ride, please remember to pay the driver your portion of the car costs. If you decide not to go on a trip for which you have previously registered, please be courteous and inform the trip organizer.

## Trip Schedule

---

All trips are ski trips unless indicated otherwise

### May

- 5: Golden Ears (hike) C2-3/1716 m**  
Reinhard Fabische 604-462-9638  
Extended snowy hiking in the lower Fraser valley.
- 5-6: Silverstar Mtn. C3/2705 m**  
Peter Gumplinger 604-733-8264  
Skiing in northern Washington.
- 6: Mt. Baird (snowshoe) C-D2/1832 m**  
Alastair Ferries 604-329-1637  
Extended hiking and snowshoeing east of Harrison Lake. Bicycles are required for ~ 10 km of logging road.
- 6: Mt. Elphinstone (hike) B2/1266 m**  
John Sapac 604-873-6740  
Easy hiking on the Sechelt Peninsula
- 19-20: Castle Towers Mtn. C3-4/2676 m**  
Stanislav Liarsky 604-983-4476  
Skiing in Garibaldi park.
- 19-21: Mt. Rainier (ski/snowshoe)**

### C3/4392

Justin Bennett 604-813-4666  
A fine volcano in southern Washington. Trip will go as long as conditions permit.

### 19-21: Mt. Robie Reid (hike/snowshoe)

### C3-4/2095 m

Emanuele Porra 604-533-7723  
Scrambling in the lower Fraser valley. Restricted to 5 experienced club members only.

### 26: Stawamus Chief (hike) A2/702 m

Akinori Nagai 604-986-2756  
Hiking up the Chief near Squamish.

### June

### 1-3: Mt. Cayley (ski/snowshoe) B4/2385 m

~~Justin Bennett 604-813-4666~~  
Skiing/snowshoeing then rock climbing on the Squamish-Cheakamus divide. If you don't want to go to the summit you are welcome to tour into camp.

## BCMC Summer Camps

---

### Valhalla Provincial Park. 17-26 August

This camp will be a joint one-week camp with the Kootenay Mountaineering Club, and is part of an initiative to invite members of the FMCBC on joint outings. There will be a car shuttle before and after the camp to enable us to camp in two sites for exploring peaks around these sites. A half-day pack-in on a good trail with 7-8 days of supplies takes us to Gwillim Lakes campsite for about 4 days of hiking and Class 3 scrambles. Then a full-day pack-in to another site for about 3 more days of exploration before hiking out to the cars. Ice axes required, and rope(s) for occasional (?) use.  
For more information please contact Brian Wood, 604-222-1541 or bjwood@telus.net

### Garibaldi Park Mountaineering Camp, 4 - 12 August (C3)

This will be a hike in, hike out, week long mountaineering trip to Garibaldi Park. The plan is to travel through Singing Pass and the Spearhead Range to Naden Pass, where the primary objectives will be ascents of Mt. Sir Richard, Nivalis Mountain and Outlier Peak. We will climb other peaks in the Spearhead Range on our return if time permits.  
Participants must be BCMC members, have a strong level of fitness, and have experience in glacier travel and scrambling to class 3. Please be prepared to discuss your mountaineering experience with the organizer.  
For more information or to reserve one of the eleven available spaces, please call Todd Ponzini at 604-408-9617.

## Membership

---

**New members** - The club welcomes the following new associate members:  
Emra Alpha, Brad Badelt, John Baldwin, Judson Berry, Steve Burgess, Randy Chatterjee, Stefan Ciota, Daniel Jordi, Taizo Komori, Charles Lausten,

Tracy Leach, Rhonda McNaught, Tania Ostman, Steve Palmier, Brad Percival, Sarah Ravn, Nikolai Sokolov, Seniz Tatar, Michael Wiskar, Peter Wood, and Yorie Yoshinari.

## What club members are doing

Honorary club presidents - **Esther and Martin Kafer** - were given a B.C. community achievement award by the B.C. Achievement Foundation. These awards are given to those who do exceptional work for the betterment of our communities.

Esther and Martin responded -

"Esther and I were very surprised and pleased when we were informed that we have been selected to receive the BC Community Achievement Award for 2007. We want to thank those long-term members of the BCMC who instigated the nomination in recognition for our nearly 50 years of active involvement in the local mountaineering community. We both have

## BCMC Centennial activities update

---

### Update

by David Hughes

We are now well into our Club's Centennial Year. The actual anniversary is October 28 and the Club is planning a Centennial Banquet, which will be held on Grouse Mountain on that date. Mark your calendars and get your tickets now.

The Centennial Committee, chaired by David Scanlon, has been working hard for the last two years and the Committee has come forward with a full slate of project and activities that have been approved by your Executive.

A number of special hikes and climbs are planned for this year. These include one or more hikes up Grouse commemorating the use of candlelight ("bug lights") to illuminate the way. Dave Perfitt is organizing these with the City of North Vancouver. Todd Ponzini is planning a special Centennial climb of Mt. Garibaldi most likely on the July 1<sup>st</sup> weekend. This climb will help to commemorate the first ascent of Mt. Garibaldi. I have been planning an expedition to Mt. Fairweather, BC's highest peak to take place in May and June. In 1958, BC's centennial as a region, Paul Binkert our past Honorary President, was one of the climbers on the first Canadian ascent of Fairweather. This year's expedition, conditions permitting, plans to repeat the once climbed Canadian Taylor Ridge route,

The Centennial video is well along the way to completion and should be available for the inaugural showing at the banquet. A committee has also been created to help our editor prepare a special Centennial Year Journal. Normally the

devoted uncounted volunteer hours, especially for the BCMC: Esther is probably still the only BCMC member who has, at one time or other, been elected [or acted pro-tem] as Secretary, Treasurer, Editor, Climbing- and Camp committee chair, Vice President and President of the BCMC!

We are well aware that without the help of many BCMC members, who assisted and inspired us, our efforts would not have amounted to anything and we thank all those who have worked and achieved together with us.

Club produces the BC Mountaineer only on even number years. A decision has been made to publish a special Journal this year that will include current and historic articles.

The Centennial Committee has also a number of smaller projects to help us remember this year. These include a centennial crest and special BCMC centennial stamp. The Committee will be advising you shortly. We still hope to build another cabin oriented to winter skiing, but delays in getting the support of the Lil'Wat nation for a cabin at Battleship Lakes has made it necessary to postpone a new cabin for this year.

### Centennial stamps

The club will be getting Canada Post to produce some stamps which can be used for postage in Canada. The stamps will feature the centennial logo and will cost 70-80c each, depending on the quantity ordered. If you wish to order some (they come in sheets of 40 or 21+ a large stamp) please let Dave Scanlon know (ph 604-572-5051) by the May Social meeting.

### ***Do you any expertise with setting up a window display?***

*The club will be putting a centennial display in an MEC shop window and we need assistance. If you have had any experience with such a display and are willing to assist, please contact Dave Scanlon at 604-572-5051.*

## **The club's centennial banquet – not to be missed**

SAVE THE DATE – OCTOBER 28

The only trip you should be planning for Sunday, October 28, 2007, should be to the Grouse Nest, for the BCMC Centennial Banquet.

Just to point out, if you miss this one, the next one will be a LONG TIME COMING!

Tickets will cost \$60 each and will be on sale beginning on the May Social.

## **Centennial climb of Mt. Garibaldi**

On the Canada weekend (June 30 – July 2), Todd Ponzini will lead a centennial ascent of Mt. Garibaldi in which all climbers will be wearing the costumes of the early 1900's.

Garibaldi was first climbed the year the club was born – 1907 – exactly 100 years ago. A member of the first ascent party was club member J.J. Trorey. Trorey's ice axe resides with current club member Brian Wood. This ice axe will be taken to the summit – 100 years after it was first implanted there. See the April newsletter for details.

The club's centennial committee is working on different ways of making the centennial logo designed by Claire Oldham, available to club members. A sew-on cloth logo, about 9 cm in diameter, will be available at a cost of \$5 each. Valid stamps, recognized by Canada Post, will be produced, as described above.

## **North Vancouver Museum special centennial display**

This will occur in the fall, after North Vancouver's centennial display has finished (The club is as old as North Vancouver!). The display will focus on several themes, featuring the club's exploration, conservation, and mountaineering history. Photographs, Ross Wyborn's excellent slide show, and historical artifacts will be included. If you wish to assist with this contact Hugh Kellas ([hugh.kellas@gvrd.bc.ca](mailto:hugh.kellas@gvrd.bc.ca)) who is coordinating this event on behalf of the club.

## **Please assist vehicle drivers by paying for your share of vehicle costs if you are a passenger**

---

The price of gas is hitting new highs at \$1.17 L. And there are still those who complain about the amount they are asked to pay. Those who drive on club trips will not get rich on this money. It is after all their car, they drive, they insure it, they maintain it. You don't have to clean it out after either. You as a passenger may even have a nap both ways. If it is a 4 wheel drive trip the vehicle you are riding in costs more to buy, and run, and

insure, and repair. The driver is the first up in the morning to pick you up and the last one to get home after dropping off everyone else.

This issue has been increasingly heard from club members lately. There are now some long time club members who won't organise trips any more as it seems they always have to drive and are fed up with it. Please assist your driver.

Dave Scanlon

## **News**

---

### **Snowmobilers deliberately trash backcountry skiing slopes**

Ron Andrews, one of the owners of the McGillivray Pass cabin used for backcountry skiing reported in late February -

"We are thinking very seriously of applying for a section 58 closure for Standard Creek as we were targeted last week by 4 sledders who very purposely trespassed our private property and

proceeded to aggressively & dangerously follow an ascent track we had just set into the alpine, sledging in the area we were skiing. The sledders then again crossed our Lodge property and shredded the slopes in front of the Lodge ignoring me and every attempt I made to signal them and speak with them. It was quite obviously a blatant provocation as they could easily see that we were at the Lodge and also out skiing.

We have had some reasonable discussions with a few of the Bralorne sledders and some of them have been helpful in trying to let people know about our operation and one has even helped by assisting to post some informational signs we've had made which sledders can't miss seeing. However, it's beginning to look like this incident at least was very deliberate. We are very concerned about the safety of our guests as a first priority. Notwithstanding also the fact that the sledding crowd have effectively overrun the Cadwallader Valley over to Phelix Creek which deprives us of some of our prime ski runs."

## Access to Skaha requires your assistance

According to Access News of 11 April, 2007, of the Climber's Access Society –

"Access to Skaha is in place for 2007, and The Land Conservancy of B.C. (TLC) and Skaha rockclimbers have been working hard on public access to Skaha for 2008 and beyond, with support from Mountain Equipment Co-op, the Access Society, and others. TLC has agreed to buy 300 hectares of nearby private land (sublot 18 - southeast of Braesyde). When/if the land is bought, and needed work done, it will provide permanent public access to Skaha. Thanks to TLC's partners, a generous donation by the current owner, and other donations, much of the needed money has been raised. **We need to raise \$1 million by June 30<sup>th</sup>, and the climbing community must do everything it can to help.**

Mountain Equipment Co-op announced on April 10<sup>th</sup> that it will contribute \$250,000 to the Skaha purchase. It is the largest such grant in MEC's history, and a great contribution toward protection of the area for its outstanding recreation and conservation values. Mountain Equipment Co-op will also match donations by its members to TLC's Skaha fund, up to \$100,000 total.

**HOW YOU CAN HELP** - Make a donation to TLC, soon, and encourage all your friends to also do so. If you're a member of MEC, make your donation at [www.conservancy.bc.ca/MEC-skaha](http://www.conservancy.bc.ca/MEC-skaha), and double your donation. Otherwise -

**SUPPORT THE LAND CONSERVANCY** - Please send all donations to TLC. They encourage you to not only make a donation, but to also become a member.

• **Donations & Membership:** To make a donation, go to [www.conservancy.bc.ca](http://www.conservancy.bc.ca), and click on the

'Skaha Bluffs' icon at the bottom of the home page. It takes you to the donations page – click on the green 'MEC Members' button. The Membership icon is also on the main page.

- **You can also contribute by mail.** TLC's head office is at #301 - 1195 Esquimalt Road, Victoria, B.C. V9A 3N6, phone (250) 479-8053.
- **Capital Campaign & Corporate Donors:** If you can contribute a substantial amount, or know someone who might be able to, contact John Keller at TLC in Burnaby, at (604) 733-2313 or [jkeller@conservancy.bc.ca](mailto:jkeller@conservancy.bc.ca)

TLC's intention is that subplot 18, together with Skaha Bluffs themselves, will become part of a new provincial park, managed for both its outstanding recreation and natural values. If for some reason the purchase is unsuccessful, TLC will keep aside all money raised, and use it either for whatever other solution is arrived at for Skaha, or for another project of direct benefit to the climbing community of B.C."

## Upper Malamute logging

Again, from Access News of 11 April, 2007 –

"Much of the upper Malamute at Squamish was logged during the last week of March 2007. The land, about 10 hectares, is owned by Malamute Holdings Ltd. About 500 trees were cut, and the logs remain where they fell. The District of Squamish issued a stop work order as soon as it heard what was happening. The logged area is quite visible, especially from above and to southbound traffic. Anyone visiting the upper Malamute in the near future should be very aware of unstable and dangerous logging debris.

The logging occurred without notice, or a required municipal permit. Neither the Ministry of Transportation and Highways nor the Sea-to-Sky Highway Project contractor has any responsibility for what happened. The logging aroused considerable concern in Squamish, the climbing community, and the news media. At a special meeting on April 10<sup>th</sup>, Squamish Council unanimously decided to further investigate, so it can decide what it will do."

## Mountain Equipment Co-op donates to Canadian conservation and access causes

Yet again, from Access News of 11 April, 2007 – "MEC also recently announced that it has joined

1% For The Planet, an alliance of businesses that believe in providing financial support to environmental initiatives. Since 1987, MEC has given in excess of \$9 million to Canadian conservation and access projects through its grant programs. Now it will donate 1% of annual gross sales to Canadian causes. This translates to an estimated \$2 million in 2007 alone.”

### **Elk-Thurston trail to be logged**

According to the elkmtntail.com website - Recently, the Chi-ihl-kway-uhk Forestry Limited Partnership (CFLP) was granted the ability to apply for a 10 year woodlot license plan to harvest sections of forest within Woodlot 0084, subject

first though to giving the public an opportunity to view their harvest plan. This woodlot covers some 800 hectares of the lower forested slopes along the Elk and Mt. Thurston Ridge, through which traverses the popular Elk - Thurston trail. The Ministry of Forests has granted the CFLP an annual allowable cut of 6,400 cubic metres, or an area equivalent to eight hectares.

The first 2 clear cuts planned are right next to the trail and the access road they have planned will actually run right over top of a portion of the existing trail! This is only the beginning; they have more clear cuts planned in the area for the future. We need to act quickly if we are to stop this logging operation (public comment must be registered by May 8th). **Please sign the petition** at <http://www.clubtread.com/elkmtntail/> ASAP!

You can find out more info about all aspects of the trail and its politics at the excellent new website – [www.elkmtntail.com](http://www.elkmtntail.com). Please help save the Elk Mountain trail!

## **Trip report**

---

### **Silverdaisy Mtn., 4 February, 2007**

It was on a cloudy cool Saturday morning that 9 souls left the comfort of their warm cars in search of the mother lode on Silverdaisy. The search for it on Ben Lomond had been cancelled because of treacherous conditions. Hopes of success were high and conditions more favourable in these parts. Travel was easy at first as a road was followed for the first 3.5 km. Then more challenging travel began on steeper terrain and icy conditions in amongst the trees. We followed a ridge paralleling the road but rising much faster and more direct. It also would be a more scenic route if visibility had been better. We climbed steadily and after a few somewhat tricky bits we emerged into the sub alpine and on a corniced ridge. Views would have been great but a steady snowfall obscured any views we could have had. Steve run into trouble as a ski delaminated and skins would no longer stay on. He ended up having to walk partway. The rest of the troops had managed to reach the top of where we would have expected to find the mother lode but cold and windy conditions meant we could not linger to search for it. After picking up Murray and Steve on our way down

we decided to make a more direct descent down to the road below. At first the route was steep and icy. At one point Silvia lost her ski and rolled down the mountainside. Quick action from Steve prevented the ski from rolling all the way down. After a traverse of the steep slope we ended up on mellower terrain and also better snow. It had been sheltered from the direct sunlight and wind. Stas entertained us with some spectacular falls. We worked our way down the open patches before we were finally forced into the forest. The trees were tight at first and also steep in places. Luckily the snow conditions were in our favour and we were able to get through without incident although Dan did provide some entertainment by falling in a steep trench and had a far bit of difficulty extricating himself.

We popped out of the trees and into one of the more recent clearcuts in the area. This allowed for a more relaxed ski down to the road. We pointed the skis down the road and let gravity do its work. No correction was required as the road was the right steepness to coast along. One pile up occurred as someone lost control when jumping one of the trenches across the road and the person following could not stop in time. No

serious injury resulted and everybody went on their merry way. A fast descent brought us back to our vehicles at 5 pm. Total travel time 7.5 hours. The long road slog in had been avoided and a good ski run down the east face of Silverdaisy make this route a worthwhile objective. A fun group made for a great outing.

After checking out two over crowded pubs we decided to stop at the Pantry and had a relaxing meal to wind down the day.

Participants: Stas Liarsky, Silvia Bakovic, Martina Metzler, Steve Palmier, Murray Lashmar, Erin Buckoll, Kristina Becanovic, Dan Lord and Jos van der Burg (Organizer and reporter).



Fun on Silverdaisy Mtn. Photos - K. Be-

### Higher Grounds

A solstice sun bathes snowy boughs,  
And warms the forest where bunnies carouse.  
The silent stillness is woken by sounds,  
Of hikers climbing to higher grounds.

They pass though festooned forest glade  
Laughing and talking in single parade.  
Snow shoes skipping off snowy mounds,  
Onward to those higher grounds.

They finally mount a wind-swept peak  
With ocean and forests at their feet  
Distant white mountains abound and surround  
These are the rewards from higher ground.

Gordon Esplin