

BC. MOUNTAINEERING CLUB NEWSLETTER



Winter in Lost Valley Ck. area.

EVENING SOCIAL MEETINGS

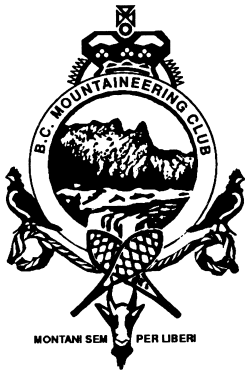
Evening socials are usually held in the ANZA club, upstairs room (corner of 8th Ave. and Ontario, Vancouver) starting at 7:30 p.m. Cookies, tea, and coffee are provided.

Tuesday, 13 December - Entertainment will be a slide show by Linda Bily on the North Shore Rescue group's expedition to Mt. Logan this May, with a rescue included. In addition, Brian Jones of Canada West Mountain School will give a presentation of backcountry winter travel and avalanche safety.

Tuesday, 10 January - Entertainment will be a slide show by Chris Cooper, entitled "In search of wild places", a ski traverse from Ellesmere Island to Coburg Island and back in Canada's eastern high arctic".



Ascending Logan. Photo - L. Bily



**HONORARY PRESIDENTS - Esther and Martin Kafer
EXECUTIVE COMMITTEE AND CLUB OFFICERS**

PRESIDENT -	DAVE HUGHES 604-980-6484	CABIN/TRAILS -	DAVID SCANLON 604-572-5051
PAST-PRESIDENT -	KIT GRIFFIN 604-736-8462		PETER WOODSWORTH 604-254-7076
VICE-PRESIDENT -	MONIKA BITTEL 604-983-3097	CONSERVATION -	MONIKA BITTEL 604-983-3097
SECRETARY -	ALICE PURDEY 604-293-2951	SUMMER CAMP -	
TREASURER -	TODD PONZINI 604-340-9653		PETER WOODSWORTH 604-254-7076
MEMBERSHIP/MAILING -		FMCBC REP -	we need someone
	JULIA BORCHARDT 604-204-0726	WEBMASTER -	KEVIN SWANSON 604-943-4364
	DERRICK JOHNSTONE 604-505-6250	EDITOR -	MICHAEL FELLER 604-270-4050
SOCIALS -			
	PAUL HAWMAN 604-924-1235	EQUIPMENT -	PAUL KUBIK 604-876-0764
	DONNA BAILIE 604-572-5051	SAFETY EQUIPMENT -	KIT GRIFFIN 604-736-8462
CLIMBING -		LIBRARY -	JOAN FORD 604-876-4255
	JOS VAN DER BURG 604-463-7582		
	EMANUELE PORRA 604-533-7723		

ADDRESS: P.O. Box 2674, Vancouver, B.C., V6B 3W8

EMAIL ADDRESS: info@bcmc.ca

INTERNET SITE: www.bcmc.ca

The **BC MOUNTAINEERING CLUB NEWSLETTER** is an official publication of the B.C. Mountaineering Club and is published 10 times per year (every month except July and September). All material within this newsletter is copyright © British Columbia Mountaineering Club.

Submissions - of any written, drawn, or photographic material relevant to the B.C. Mountaineering Club are welcome. If possible, submissions should be sent to the editor by email or on a diskette. Please note that images should be at least 60 pixels/cm (150 pixels/inch) for successful printing. Images with a lesser resolution will probably not be printed. Deadline for submissions is the first Tuesday of the month preceding the publication month.

Send submissions to Michael Feller (email - feller@interchg.ubc.ca, ph. 604-270-4050).

Editorial policy - All submitted written material relevant to the B.C. Mountaineering Club will be published unless the club executive decides otherwise. Submitted material may be edited for clarity or brevity, or for consistency with club policies.

Opinions and comments expressed in this newsletter are not necessarily those of the B.C. Mountaineering Club.

SCHEDULED TRIPS

Participation on club trips is open to any person with adequate skills and experience, subject to the approval of the trip organizer. All non-member participants must sign a disclosure and waiver form relieving the club and all other participants on the trip from any liability. A trip organizer is not a certified guide. The function of the organizer is to organize the trip, ensure that it gets underway, know the access to the area, and know a route or routes on the climb.

It is expected that each person on a club trip has the necessary skills, experience, fitness, and equipment. The organizer may specify certain equipment mandatory for participation in a trip. The club has avalanche transceivers and snow shovels available for hire. These may be obtained by contacting Kit Griffin at 604-736-8462 at least 2 days prior to the day they are wanted. Any person who attempts to participate in a club trip without such mandatory equipment, may be requested to withdraw from the trip. The club has a satellite phone available for hire. This may be obtained by also contacting Kit Griffin at 604-736-8462 at least 2 days prior to the day it is wanted. Each person on a club trip is responsible for his or her own safety and for checking the equipment used. Please be considerate and call the trip organizer more than 1 day prior to the trip.

If you are given a ride, please remember to pay the driver your portion of the car costs. If you decide not to go on a trip for which you have previously registered, please be courteous and inform the trip organizer.

All trips are ski trips unless otherwise indicated.

		ORGANIZER	
December 10: Mt. Strachan (Snowshoe)	B2/1459m	John Sapac	604-873-6740
Snowshoeing in Vancouver's North Shore mountains			
December 10: Thar Pk.	B3/1940m	Jos van der Burg	604-463-7582
Skiing in the Coquihalla area.			
December 17: Organizer's choice	B-C2-3	Paul Morton	604-874-7372
Skiing somewhere. Contact the organizer for further details.			
December 17: Mt Baker area	B2	Marilyn Cram	1-604-823-6071
Skiing in the Mt. Baker area of N Washington.			
December 17: Mt. Seymour transceiver practice	A1	Peter Woodsworth	604-254-7076
Practising avalanche transceiver use above Vancouver.			
December 24-25: Mt. Baker (snowshoe)	C3/3286 m	Ravil Chamgoulov	604-294-0761
A Christmas ascent in northern Washington, approaching via the Coleman Gl.			
January 7: Flora Pk.	C3/1952m	Peter Gumplinger	604-733-8264
Skiing in the Chilliwack valley area.			
January 7: Needle Pk. (snowshoe)	B2(3)/2075m	Julien Henley	604-990-9224
Snowshoeing in the Coquihalla area. Joint trip with the ACC.			
January 14: Silverdaisy Mtn. (snowshoe)	B2/2068 m	Fred Douglas	604-293-2951
Snowshoeing at the western edge of Manning Park.			
January 14-15: Mt. Weart (snowshoe)	C3/2835 m	Todd Ponzini	604-340-9653
Snowshoeing in Garibaldi park, north of Whistler.			
January 14-15: Introduction to snow camping	A1	Peter Woodsworth	604-254-7076
For those unfamiliar with snow camping, this trip will introduce you to it in the Mt. Seymour area of Vancouver's North Shore mountains.			

MEMBERSHIP

Membership fees for 2005/2006 are now due - Membership fees of 2005/2006 are now due. If you do not pay your dues, **THIS NEWSLETTER WILL BE THE LAST ONE YOU WILL RECEIVE**. You should fill out the yellow renewal form accompanying the October newsletter, indicate if

you would like to receive the newsletter by email, read and sign the waiver on the reverse side, then send the form with the appropriate dues to the club. Membership dues are -

Single	\$45	Junior	\$20
Couple	\$68	Life	\$800

INTRODUCTION TO BACKCOUNTRY SKIING PROGRAM

Program Objectives: To develop the skills, knowledge, and confidence required to safely participate in overnight backcountry ski trips. The program will include 1 evening seminar and 2 weekends spent on overnight ski trips in the mountains. The seminar will be held on the evening of January 19 and the program will run on the weekends of February 4&5 and 11&12.

Program topics: Clothing and equipment, trip planning, winter camping, route and snowpack evaluation, avalanche awareness, transceiver use and self-rescue, winter mountain travel and weather evaluation.

This program does not cover glacier travel or first aid. Cost for the program is \$175.

For whom: Strong downhill skiers with previous summer or winter backcountry camping experience, and/or: Experienced backcountry day skiers who want to gain experience on overnight winter trips.

Prerequisites: Open to all BCMC members (new and current) in good physical health and fitness who are able to confidently ski "blue" (intermediate) runs with an overnight (15kg) pack. *Note that this is not a program on how to ski – the entire group will be relying on you to be at least a confident intermediate skier!*

Equipment Required: Backcountry ski equipment (skis, boots, poles & skins), shovel, avalanche transceiver, and overnight camping gear. Group gear such as tents and stoves will

be organized at the pre-trip evening seminar. For further information check the "Programs and Camps" section on the BCMC Web Site: www.bcmc.ca

For more information and to book one of the twelve available spots, please call Todd Ponzini at 604-340-9653.

CENTENNIAL TRIVIA

Did you know: The BCMC once had a geological and a botanical section? They were formed in the Nov. 20th meeting in 1911. Frequent meetings were held during the ensuing winter months. The

botanical classes were held by John Davidson F.L.S. Provincial Botanist. John Davidson eventually turned the club's natural history sections into the Vancouver Natural History Society.

SIGNS TO INDICATE WHERE DIFFERENT WINTER RECREATION ACTIVITIES CAN OCCUR IN THE SEA TO SKY CORRIDOR

At last year's AGM, I announced we were moving into the implementation stage of the Winter Sharing Accord and we were going to post signs at various trailheads and common access points to identify the recommended usage for different areas in the Sea to Sky corridor. Unfortunately those plans had to be shelved when government asked us to hold off with the signage. We have now received

approval to go ahead with the signage and with publicizing the Winter Sharing Accord. We have a grant from Mountain Equipment Co-op for signage and also a commitment from government to fund not only signs, but also brochures and a website. While the approval from government has come a bit late, we are still hopeful that we can get the signs made and posted by early December. The brochures and website will follow.

Articles wanted for the 2006 BC Mountaineer - *Articles with illustrations are required for next year's B.C. Mountaineer. If you have been on any more interesting, or extended, or exotic trips, write them up and submit them to your editor - by 31 January, 2006.*

We are looking for volunteers from the Club to help install some signs. If you can volunteer a day in early December to help put up some signs, please contact me. A notice will also go on the website in the near future. And if you are interested in helping with the website and brochures, please contact me (e-mail: monikabittel@telus.net).

BCMC CALENDAR NOW AVAILABLE

A calendar committee of Monika Bittel, Julia Borchardt, and Alice Purdey, assisted by Jason Brawn, has just produced the club's first (?) calendar.

The calendar is a great mix of old and new photographs, ranging from fascinating early 1900's archival images to stunning full colour photographs from more recent camps and trips.

You can pick yours up at a club social or purchase the calendar online at www.bcmc.ca. The price is \$12 for members and \$15 for non-members. If you purchase the calendar online, there are additional shipping and handling charges. The calendars will also be available at Mountain Equipment Co-op.

REPORTS FROM THE 2005 ANNUAL GENERAL MEETING

The club held its 2005 AGM on 8th November. It was well attended with over 120 people present, with a quorum of well over 25 active members. Your president, Kit Griffin, stood down and was thanked by many for his contributions to the club, executive members presented their annual

reports, most of which are printed below, a new executive (see p. 2) was appointed, then Dave Way presented a fascinating show on rock climbing in Cuba. Reports not printed below will appear in a subsequent newsletter.

PRESIDENT'S REPORT - by Kit Griffin

As always, I have the pleasure thanking the members of the executive who have done (and do), an extraordinary amount of work behind the scenes. These remarkable people ensure we have a trip-list every season, a regular newsletter and club journal ("The B.C. Mountaineer") that contains accounts of recent climbs, camps, expeditions and photographs. Furthermore, we have accurate minutes to which to refer, a speaker every month (often world class), trails and maintained cabins, an Internet presence at bcmc.ca, a balanced budget (therefore opportunities to support worthy causes), a venue with après meeting snacks, ski and alpine-climbing mentor-programs, conservation and access issues represented, summer and winter camps to attend, technical equipment to rent - the list goes on.

I'd also like to thank the volunteer organizers who give up many weeks of personal time focusing on assisting novice-climbers and skiers to become safer and educated alpinists. As a club member I have attended traditional mountaineering and guided courses, and I can say for certain that club-based activities are remarkable in value, practical in application, and do not usurp technical courses such as high-angle rescue, wilderness first aid or "6th class" (aid) climbing or waterfall-ice climbing. The club has reliable contacts and will recommend schools and guides as requested. That said, the organisers have been diligent in obtaining a commitment from people who take the club programs to attend meetings and volunteer when appropriate. There is little point offering something valuable or good to someone who does not appreciate it.

Briefly, I'd like to remind you of the work that club members have done: Work on the Plummer Hut last year and ongoing work at the Mountain Lake hut. My thanks to David Scanlon, Peter Woodsworth, David Hughes and the team who worked so hard on the cabin projects. Thanks again to Anders Oorum and the Access Society for keeping "The Chief" a gondola free zone. My thanks also to all who have worked on the Conservation Committee - Michael Feller, Brian Wood and Monika Bittel - these people work constantly to ensure we have backcountry access with limited conflict with heli-skiers or recreational snowmobiles.

Suffice to say I'm very proud of the people I have worked with on the executive, the volunteer groups

and the membership. It's with mixed feelings I now step down as President of the BCMC.

Lastly, I'd like to send a Happy Birthday to the BCMC's oldest member - John Holmes - who joined in 1952, and recently turned 94. Many happy returns John.

VICE-PRESIDENT'S REPORT - by Monika Bittel

I want to echo the thanks expressed by Kit Griffin, David Hughes and other members of the executive to everyone who has contributed their time, skills and talents to the benefit of the BCMC. I particularly want to thank Kit Griffin for all his efforts over the past years. It was the rare exception that I had to step in for him at an executive meeting or social.

One of the projects for this year was to produce the Club's first calendar. I think the calendar turned out well, thanks to the efforts of the Calendar Committee, the design talents of Jason Brawn and Julia Borchardt and some great photo contributions from past and current members. The calendar not only promotes the BCMC but also non-motorized recreation. We will be producing a calendar for 2007, the Club's centennial year. The calendar will again feature a blend of archival images and more recent photos. We also have some additional features planned for the Centennial calendar, which will make it pretty special. We will provide guidelines for photo submissions in the New Year. I encourage members, especially the long-term members, to sort through their collections to find some images that reflect the activities of the Club and its members over the years. If you have any comments or feedback about the 2006 calendar, please pass them on to Alice Purdey, Julia Borchardt or me, who make up the Calendar Committee. If anyone is interested in getting involved with the calendar for 2007, please get in touch with Alice, Julia or me.

I am looking forward to the next year. I think it will be busy as we get closer to our Centennial year. It will be a time to reflect on what this Club is all about and to build on the strengths of the BCMC.

PAST PRESIDENT'S REPORT - by David Hughes

I have been fortunate to work with a great Executive during my time on the Executive. Club members can rest assured that you are well served by fellow members who have worked hard and unselfishly for the benefit of the Club and its members.

I would like to acknowledge the contribution that our President, Kit Griffin, has made to the Club. He has been very much a leader in developing and keeping our courses operating with a high level of participation. Our courses have brought us many new members and have been the prominent way we help the public become aware of our mountaineering environment and gain a start in becoming mountaineers in their own right. We always need more volunteers and leaders for our courses, trips and camps. Kit has promised to continue with his help and guidance. We have found from our participation in the Sea to Sky Forum and the LRMP that we have become a leading spokesman for backcountry recreation. Through the efforts of Monika, Mike, Anders and others, we have helped to preserve and designate areas for non-mechanized recreation. We have discovered that the existence of our cabins has further helped to get a non-motorized designation for these areas. Other competing groups have generally also respected these designations. I encourage you to get out and use our cabins, and remember, members do not pay cabin fees. We have been able to start the process of resurrecting committees to get more members involved. We have started the Climbing committee again and we are now setting up a small committee to help in the membership area. Dave Scanlon, besides directing our cabin and trails efforts, also heads our Centennial Committee which now has involved over 23 members.

Our Club communication vehicles continue to get better every year. The tireless efforts of our editor, Michael Feller, and quality of our website under the direction of Kevin Swanson, have served us well. I would also like to acknowledge the excellent work that our Secretary, Alice Purdey and our Treasurer, Todd Ponzini, have contributed.

We have some enthusiastic people on your Executive, but we need more participation from our non-executive members. The success of our Club is participation and your membership is much more valuable when you get involved with Club activities and join Club trips.

This is Anders Ourom's last year on the Executive. He has been a long time leader and supporter of the Club for more than three decades. We know that he will continue to participate and help the

Club by his excellent work with the Climber's Access Society.

Thank you, and I look forward to seeing you on Club trips this coming year.

MEMBERSHIP REPORT- by Julia Borchardt

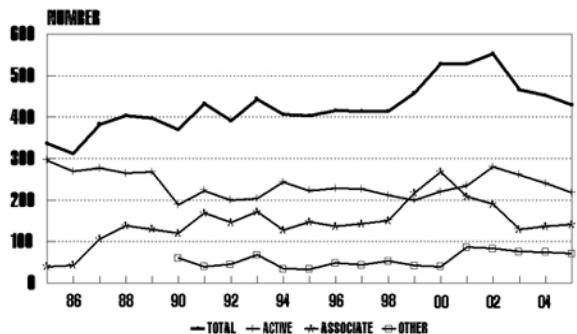
We had a total of 429 members & 26 groups in 2005 which was down from the 467 members and 25 groups we had in 2004. We lost some active members this year but had an increase in associate members. Recent membership trends are shown in the figure below.

Our summer and winter programs continue to be very popular and a good source of new members. Our web site continues to develop and is a valuable resource for members. Check it regularly for the most current events, announcements and trip info. You can log into the members section to update your own information, find contact info for other members and read our wonderful newsletter. We even have back issues online now. There's also a growing list of companies offering discounts to BCMC members. I hope to add many more to the list in the coming year.

I had a very busy year personally and would like to thank everyone who helped me out by processing memberships and making phone calls, particularly Emanuele Porra, Jos van der Burg, Kit Griffin, Kevin Swanson and of course my co-chair Steve Tate.

If you haven't already done so, please renew your membership for 2006. If the current snow levels are any indication, we have a fabulous winter season ahead of us.

BCMC MEMBERSHIP



SOCIALS REPORT - by Derrick Johnstone

We enjoyed another year with some great presentations! We saw a little of everything from a new local guide book to Himalayan rescue to the life of a guide in Antarctica. This year is also looking great and will include North Shore Rescue's Logan expedition and another adventure from Chris Cooper.

As we rely on a number of members to put on our socials, we'd like to first thank Pam Krannitz for her efforts over the past 2 years and to Paul Hawman, who came onboard when Pam decided to step down. Thanks also to Marcus Dell who came to the rescue when we've needed a digital projector. We hope members find the social evenings an enjoyable part of the Club. If anyone has suggestions on how to improve our socials or would like to help out, please let us know. Remember, you can assist us greatly if you take a chair or two upstairs after the meeting.

CABINS AND TRAILS REPORT - by David Scanlon

Once again our new Furry Creek access to Mountain Lake Hut has proved fruitful with many registered into the hut. We had a family camp at the hut this year, run by Peter Oostlander. We hope Peter will make this an annual affair. Our North Creek cabin however, is underutilized.

Our trails always need work of some kind. We've had no official trail clearing trips by your trails committee this past year. (too much Centennial stuff) but it warms my heart to see so many club members doing thigs on their own. I would like to thank those I know of. If I missed you, I apologize now. Come and tell me what you've done and I'll mark you down next time.

Pierce Lake Trail - Jerry Kollmuss; Airplane Creek Trail - Emanuele Porra, Jerry Kollmuss, Jos van der Burg, and Larry Tost; Mt. Robie Reid Trail - Reinhard Fabische, Jos van der Burg, Dennis Siska, and Emanuele Porra; Blanchard Needle - Emanuel Porra and Jerry Kollmuss; Lion's Trail - Paul Kubik; Evan Creek Trail - Larry Tost, Jos van der Burg, Brett McKonakie, Emanuele Porra, and Jerry Kollmuss; Silvertip Trail - Mark Burgoine, Denis Lalond, and Emanuele Porra; Battleship Lakes Road and Trail - David Scanlon, Donna Bailie, Jerry Kollmuss, and Emanuele Porra. Sigurd Trail, tunnel Point Trail, and Harvey Basin Trail - Paul Kubik.

Wow! Many man hours of work there. You too can help. Whenever you are out hiking, remember -

"Flick that Stick" and "Drain the Rain".

CAMPS REPORT - by Peter Woodsworth

Another successful year of quality camps. Thanks to all the usual suspects:

- Todd Ponzini who led seven climbers into the Sphinx Glacier and Gray Pass area of Garibaldi Park for a week of general mountaineering;
- Peter Woodsworth who, for the eighth straight year, organized the Lake Lovely Water assault team (18 participants)
- Peter Oostlander who organized a family camp based at the Mountain Lake Hut and hopefully started a new trend; and
- Karl Ricker who tried to ride herd on 16 independent-minded hikers as they trekked from Lorna to Tyaughton Lakes in the south Chilcotins.

TREASURER'S REPORT - by Todd Ponzini

Overall, our membership revenue is down somewhat from 2004, but thanks to good budgeting and cost control, we've earned enough income in 2005 to offset our losses from 2003. (see Table below)

I'm pleased with the income that the Club has earned this year, as it will help pay for the digital projector that we bought in October 2005 to use at our socials, as digital slideshows are starting to outnumber traditional slideshows.

We have continued to earn significant revenue from our summer programs, and in 2005 we had improved revenue from our winter programs. These programs are very popular, and this revenue is very important to the Club. In addition, the Club gains many new members each year from participants in these programs.

Our Editor has been successful in finding a lower cost, better quality option for the printing of the newsletter. I think we all agree that the quality of the newsletter in the past year has been top-notch, and the costs are significantly lower.

Although the cabin fees that the Club has received have been much lower than what would be expected if all the non-members who used our cabins had paid the fees, the new signs that were installed in the cabins have tripled the fees that we've collected. These fees are important as they pay for our maintenance on our cabins.

In conclusion, the Club had a successful year, and we are continuing to control our costs and save funds for our centennial activities in 2007.

Revenue and Expenses from the General Fund for the year ending 30 September 2005, and previous years.								
	<u>2005</u>	<u>2004</u>	<u>2003</u>	<u>2002</u>	<u>2001</u>	<u>2000</u>	<u>1999</u>	<u>1998</u>
REVENUE								
Membership dues	14,891	15,853	15,945	15,917	6,919	16,168	13,252	11,390
Interest income	1,148	1,538	1,740	2,723	4,195	3,049	3,347	933
Equipment rental, cabin fees	426	205	385	375	285	583	705	460
Smoke Bluffs project/ T-shirt sales	---	220	198	218	111	---	425	1,115
Instruction courses (net)								
- ski	1,645	196	385	1,385	1,112	1,814	843	1,976
- summer	4,156	4,179	3,474	4,410	2,313	2,809	3,284	---
Sat phone rental	60	520	---	---	---	---	---	400
Member donations	205	---	476	80	---	75	670	80
Publication sales/ advertising	673	169	680	17	994	---	474	36
Camps (net)	257	285	318	230	758	409	665	219
Other	51	59	2,493	---	86	300	---	45
Bequests	---	---	---	9,000	---	---	1,933	9,312
Total Revenue (after bequests)	23,652	23,224	26,074	25,275	26,773	25,207	23,665	16,254
EXPENSES								
Publications								
Mountaineer	4,458	2,624	4,406	4,004	4,574	3,016	3,175	5,344
Brochures, constitution, index, etc.	---	269	1,057	---	---	---	570	---
Newsletter	4,615	5,954	7,316	7,627	6,396	5,338	4,463	4,585
Website	477	1,810	1,742	1,268	978	1,400	---	---
Social activities (net)	1,522	1,608	1,472	1,530	1,478	1,240	1,363	1,680
Postage and stationary	1,836	2,434	2,630	3,003	2,190	2,346	1,970	189
Amortization of assets	2,001	2,197	1,578	1,052	1,081	1,055	508	890
Insurance + tax (cabin)	---	850	---	19	584	516	516	515
FMCBC and other memberships	5,720	5,500	5,520	4,040	4,284	4,334	4,944	3,580
Radio licence/ Sat phone fees	385	322	---	124	151	219	178	184
Cabin	176	223	348	43	27	50	50	121
Equipment repair/ replacement	---	---	---	---	---	82	---	93
Conservation	---	---	---	500	---	---	---	---
Voice mail	180	190	251	252	59	291	198	193
Miscellaneous	75	458	203	295	253	61	25	40
Donations	500	836	252	719	1,946	2,250	464	200
Courses	---	---	---	48	---	---	485	---
Archives/Library	---	---	1,281	1005	2,023	7,123	---	---
Total expenses	21,945	25,275	28,056	24,524	25,988	29,322	18,909	7,614
Surplus (deficit) of Revenue over Expenses (after bequests and archives expenses)								
	(2051)	(1982)	751	785	3,009	4,756	(1,360)	
Member's Equity for all club funds								
General Fund (ex. Cent.)	60,365	59,026	61,130	64,504	66,040	56,794	61,188	57,181
Literary & Reserve Fund	38,122	37,956	37,847	37,530	37,236	35,564	34,687	32,981
Life Membership Fund	9,500	9,500	8,700	8,650	8,650	8,750	8,750	8,650
Centennial Fund	9,538	9,307	8,041	7,122	6,737	4,365	3,994	3,162

CLIMBING REPORT - by Jos van der Burg and Emanuele Porra

Another year has passed for the club and the statistics show some disappointing numbers. Besides the number of winter trips being down from last year, the number of participants has also dropped. We can put some of the blame on the unusually low snow pack. Additionally, poor weather on numerous occasions forced the cancellation of many trips. For the summer and fall schedule, however, the numbers were considerably better. There we saw many day trips, but fewer weekend trips. Again, weather was a significant factor in the cancellation of trips. The overall number of participants was similar to last year, but there continues to be a demand for trip organizers. We hope there will be a turn around for 2006. The club would like to encourage any member who has been on 2 club trips or has been an associate

member for 2 years or more, to upgrade to active status and consider organizing a trip or two for the club. You are needed to help keep the club as successful as it has been for the past 98 years.

On that note, we would like to thank all the trip and camp organizers in 2005 for their hard work and effort. It was greatly appreciated. Also, to our phone volunteers who had the thankless task of chasing members to get them to organize trips. We could not do it without you.

Our dedicated phone volunteers were – Eleni van Hemert, Evelyn Feller, Peter Oostlander, Michael Fuhrman, Larry Kost, Reinhardt Fabische, Marian Jans, Jim Fraser, Tracy Langham, Alice Purdey, Margaret Hanson, Beth MacPherson , Brian Wood and Jack Pals. Apologies if we left anybody out.

No ski camps were organized. One ski traverse was posted on the schedule but was cancelled due to weather and poor snow conditions. Please consider organizing a camp for the club.

# of Trips		# of Participants			Success	
Organized	Proceeded	Total	# of Members	Reached objective	Did not reach objective	
1) Winter + Spring						
a) Day trips						
43 (44 in 2004)	26	167 (255 in 2004)	108	17	9	
b) Weekend trips						
37 (44 in 2004)	15	88 (161 in 2004)	56	11	4	
2) Summer + Fall						
a) Day trips						
35 (31 in 2004)	25	212 (199 in 2004)	137	20	5	
b) Weekend						
29 (39 in 2004)	18	125 (135 in 2004)	91	15	3	

And one final note to any member who has any suggestion on improving the trip schedule, please let us know. We can only improve the schedule if you give us feedback about the trips you have been on or would like to see on the schedule.

WEBMASTER'S REPORT – by Kevin Swanson

Once again, I have had an interesting and (I feel) productive year as BCMC Webmaster. There have been many new developments both on the website itself, and behind the scenes.

First of all, as of the start of March, the BCMC website moved to a new hosting company. As a by-product of the move, the club will be saving over \$800 per year – a savings of at least 80%. This also simplified implementing some of the newer features on the site, including website statistics.

- E-mail newsletter notification: Members can choose to be advised by e-mail whenever a new club newsletter is uploaded, . As of now, over 120 e-mails are sent out every month, advising members of the new posting. After the most recent notice, a quarter of them signed in to view the online newsletter within a day.

- A new trip schedule: Our new schedule is more integrated with the club's membership database. The schedule recognizes when you are logged in to the system, and permits you to make changes to trips for which you are listed as organizer.

This integration also makes it easier for the Climbing Chair to enter trips, by automatically taking contact information from the membership list, rather than having to enter all the information every time.

Any club member can also enter a report on a club trip. If you are logged in, go to the trip schedule. Click on the “view past trips” link at the top. Find the trip you’d like to report on, and click on the title. Click the “File a trip report or upload photos” link, and follow the instructions!

In future, we will implement automatic report solicitation: Once a trip’s date has passed, an e-mail will automatically be sent to the organizer, with a link where the organizer can report whether the trip went, was successful, how many took part, and any other comments.

- Trip reports and photos: As mentioned above, members can enter reports on club trips from the trip schedule, and upload photos, complete with comments. The process is quite straightforward, and help is always just an e-mail away...
- Upload of files: Members can upload digital photos for the club’s newsletter from the members’ section of the site. On the default menu, immediately after signing in, look for item number 4 - Upload Photos for Newsletter. The editor will be automatically e-mailed, informing him of the new photos.
- Persistent login: When a member logs in to the site, there is now a box asking whether you’d like to be kept logged in. If you check the box, you won’t need to go through the login again. When going to the trip schedule, no login is necessary to be recognized by the system. If you spend a while on a page, and your session times out (after 20 minutes), no re-login is needed.
- Improved privacy provisions: Due to privacy concerns from a number of members, we’ve implemented the capability of hiding your information – in fact your existence as a member – from other members of the club. You can also have your e-mail address on file with the club, to receive notification of the monthly socials and newsletters, but not permit

other members to contact you. Keep in mind that even if other members *can* contact you by e-mail, they *never* see your address unless you reply.

- Online payments: The club has started accepting online payment for merchandise – namely the 2006 club calendar. Watch for other opportunities for online purchase, as well as for donations to the Centennial Fund, and online payment of cabin booking fees for non-members.

The gathering of statistics for the site has only been in place for a short time, but they show some interesting information. For the first week of November, 2005:

- 432 unique visitors to the site made a total of 719 visits. (I’ll admit that many of the repeats were me, working on loading and reloading pages while trying to make them work!)
- 94 of those visitors (21%) bookmarked the site.
- The index (home) page was the first point of entry 454 times, but it was the last page viewed only 154 times – thus most visitors continue to view other pages.
- Of all the visits that came to the site from external locations (in other words, not linking from one page to another within the site) 83% were typed into the address bar, or were bookmarked, 11% came from search engines (mostly Google) and 6% came from other websites, such as Bivouac, MEC, FMCBC, and the North Shore Hikers.
- The average visit to the site lasts for 321 seconds – almost 5 ½ minutes. On the internet, that is a long time. (I’ll also admit to skewing this a bit, by spending hours at a time tinkering.)

I think I’ve used more than my share of available space, so in closing I hope this report has given you some idea of the features available on the website, and encourages you to do so. As always, e-mail me at webmaster@bcmc.ca if you have any comments, suggestions, concerns or questions.

EDITOR’S REPORT - by Michael Feller

During the last year we produced our usual 10 newsletters containing 104 pages - slightly less than in recent years (see table below). The space

devoted to club news and activities - 82% - was also slightly higher than in recent years. The space devoted to trip ads has continued its recent decline, mainly due to a decrease in the number of trips being offered by the club. Despite this, space devoted to club trip reports remains near its all-time high.

All contributors to the newsletter deserve thanks, particularly Silvia Bakovic, Gordon Esplin, Anders

Ourom, Todd Ponzini, Alice Purdey, Karl Ricker, Dave Scanlon, Greg Stoltmann, and Jos van der Burg. Thanks are also due to Susan Rootman for typing and Evelyn Feller for assistance in stuffing newsletters into envelopes, and to Kit Griffin for printing the envelopes for stuffing.

Work on the second volume of the index to club publications has been proceeding slowly, but should be finished this winter.

Newsletter Total Number of pages (%)

	<u>2004/05</u>	<u>2003/04</u>	<u>2002/03</u>	<u>2001/02</u>	<u>2000/01</u>	<u>1999/00</u>	<u>1998/99</u>	<u>1997/98</u>	<u>1996/97</u>
Trip ads	7.5 (7)	9 (8)	10.5 (10)	10.5 (9)	11.5 (10)	15 (14)	11.5 (10)	12.5 (15)	12.5 (10)
Trip reports	30 (29)	28.5 (26)	30 (28)	22 (19)	30.5 (27)	28.5 (28)	24 (10)	17.5 (20)	16.5 (13)
Club news	47 (46)	46 (43)	43 (40)	43.5 (38)	40 (36)	26 (25)	41 (34)	33 (38)	36 (28)
Other news	17.5 (17)	17 (16)	12 (11)	24.5 (21)	24 (22)	28.5 (28)	39 (33)	19 (22)	35.5 (28)
Features	0 (0)	0 (0)	11.5 (11)	11 (9)	0 (0)	3.5 (3)	0 (0)	2.5 (3)	15.5 (12)
Equipment/ Technique	0 (0)	5 (5)	0 (0)	0 (0)	0.5 (0)	2 (2)	4 (3)	0 (0)	4 (3)
Letters/Reports	0.5 (0)	0 (0)	0 (0)	3.5 (3)	5.5 (5)	0 (0)	0.5 (0)	0.5 (1)	7.5 (6)
Book reviews	0.5 (0)	0 (0)	0 (0)	0 (0)	0 (0)	0 (0)	0 (0)	1 (1)	0 (0)
Ads	1(1)	2.5 (2)	0 (0)	1 (1)	0 (0)	0 (0)	0 (0)	0 (0)	0 (0)
Total no. of pages	104	108	108	116	112	103.5	120	86	127.5

BCMC CENTENNIAL REPORT – by David Scanlon

The Centennial committee has been very active this past year.

The Martin Kafer and Brian Wood documentary BCMC video is coming along. They've had many discussions and meetings with different filmmakers getting ideas and information. As it turns out they have mountains of information from which to pick. The written club history is being produced by Michael Feller. We will next year, probably in the spring, be on the lookout for those with an artistic flair to help the Centennial committee with ideas for designing and getting made, 2007 – badges, crests, caps, t-shirts, etc., so beware, come and help and be a part of the fun. We'd like more submissions of ideas for a club flag. All ideas are welcome.

An application has been put in to B.C. Ministry of Forests and Range for the "Application to Occupy" permit for the Battleship Lakes Centennial cabin. There have been 5 trips in to the area this year and a cabin site has been selected. As of this year we could drive in 8.3 km making the hike in only 2 hours.

I've saved the best for last – the calendar! For a first time effort the results are awesome! Thanks and thanks again to Monika Bittel, Alice Purdey, Julia Borchardt, and Jason Brawn. The calendar is the first centennial project brought to fruition – the first of many. We're so looking forward to next year's edition.

D. Scanlon

ACCESS SOCIETY REPORT – by Anders Ourom

The Access Society, of which the BCMC is a member, had another successful year during 2004-05. Membership grew, to well over 300, and both income and expenses rose. (It appears that charitable status helps encourage donations.)

Highlights included:

- Nine or more volunteer Adopt-a-Crags, featuring about 300 volunteer-days.
- The Squamish Roc Trip 2005, a big climbers festival, fundraiser, competition, and community builder.
- The Land Conservancy of B.C.'s purchase of the gravel pit between Stawamus Chief and

Shannon Falls, ensuring that there won't be any more gondola proposals.

- The quiet and final demise of the gondola proposal.
- The usual meetings and events.
- Attendance at the outdoor retailer trade show in Salt Lake City, for fundraising and networking. An enormous and fascinating event.
- Completion of the socio-economic study of climbing at Squamish.
- Construction projects at Cougar Canyon, near Vernon (toilet, notice board, parking), Crest Crags,

near Campbell River (toilet, parking, trails), and plans for similar work at Conroy Creek, Cheakamus Canyon.

- A part-time executive director.
- Continued work on the Sea-to-Sky highway improvement project, Smoke Bluffs planning, Malamute, and Stawamus Chief management.
- New graphics, including website, brochure, and membership display.

We'll continue as we have been in 2006, though there'll no doubt be new challenges.

NEWS

Parking Meters in Parks – A Comedy of Errors - Confidential government documents reveal a litany of problems

According to the Western Canada Wilderness Committee on 27 October - "Confidential government documents released to the Western Canada Wilderness Committee through a Freedom of Information (FOI) request shows that a BC government decision to put parking meters into BC's provincial parks has been beset by a series of escalating problems. The FOI documents revealed:

Parking meters in 10 parks malfunctioned with Canadian coins because the meters were designed for US coins. Apparently this was not discovered until the machines were installed. The design flaw caused the meters to repeatedly jam, and combined with other flaws, resulted in a budgeted replacement cost of over \$300,000. In 2003, the first year the meters had been introduced, a government employee remarked that the government had been sold "machines with coin mechanisms that are not compatible with our currency."

Heavy vandalism to meters. Meters were vandalized with blowtorches, glue, power cutters, pry bars, vehicle jacks and bolt cutters which resulted in thousands of dollars of unanticipated costs. A government official who believed many of the meters were compromised because thieves knew how to access the meters, commented, "All of our parking machines and vaults are now at a very high risk of theft."

Costs of the meters may have outstripped revenues. The meters cost just over \$1,200,000 to buy and install. The BC government reported

annual revenues of \$700,000. Reported revenues, however did not take into account full costs including: vandalism, government staff time, maintenance, repair, replacement of vandalized or faulty meters, lost tourism dollars and dramatically increased commissions to park facility operators which amounted to hundreds of thousands of dollars. A senior government official commented to a regional park manager. "Last week I signed off an enormous budget variance report to the negative. I feel nothing but sympathy and frustration on this subject."

"This scheme has been a comedy of errors from beginning to end. The smart thing to do is for the Minister responsible for parks, Barry Penner, to admit that a mistake was made and take the meters out of our parks immediately," said Gwen Barlee, policy director with the Wilderness Committee. "The decision to put parking meters in our parks has been an unmitigated failure."

Earlier this year FOI documents and information leaked to Wilderness Committee revealed that the unpopular meters had driven down attendance to parks by over one million visits, resulted in high non-compliance and missed revenue targets by at least 75%. An internal audit also warned the BC Liberal government that the project was: "high risk;" that the government didn't have the capacity or means to enforce public compliance; and that costs could outstrip revenues.

"Common sense tells you that this was an experiment that failed. Page after page of these records shows problem after problem," said Barlee. "The government knew there were major issues from day one. If they continue down this path they are simply throwing good money after bad."

For more information call: Gwen Barlee 604-202-0322 (c) or 604-683-8220 (w).

BC Parks plans for Wedgemount Lake area

— Mel Turner, a planner hired by B.C. Parks to develop a plan for the Wedgemount Lake area facilities, met with the BCMC executive at their November meeting to present proposals for the plan. The plan involves consolidation of Wedgemount hut and surrounding campsites, so that 10 campsites would be developed near the hut, as at present, while 10 campsites would be provided from the multitude that currently exist near the lake. New toilets would be constructed near the hut and near the lake campsite. Contents of the toilets would be helicoptered out. The executive supported the plan and has subsequently conveyed this support to B.C. Parks, together with a concern that the area should not be made so accessible that inexperienced people are enticed into areas there that are beyond their capabilities.

Avalanche training by computer — The Canadian Avalanche Association has recently developed a free on-line program which helps teach avalanche self-rescue basics.

The program uses video clips and various interactive exercises to guide participants through the different avalanche self-rescue steps. The on-line course, however, does not replace actual avalanche safety training.

The on-line program is available at www.avalanche.ca by clicking on “what’s new”.

Avalanche reports are also available at this website.

Proposed gondola up the Squamish Chief is now less likely

— According to the 7 November issue of Access News, of the Climbers Access Society of B.C., “The Land Conservancy of B.C. now owns the gravel pit between Stawamus Chief and Shannon Falls Provincial Parks, which was to have been the base station for the proposed tourist gondola. Our thanks to TLC for this key acquisition. The gravel pit will be leased to the highway project for the next four years, for use as headquarters, and for storing equipment and supplies. In the meantime, plans can be made for the longer term disposition of the land. TLC is also working on other strategic land acquisitions in this area.”

Information about TLC, and how to join or donate, is at www.conservancy.bc.ca.

Latest updates on mountain conditions

- Again, according to the 7 November issue of Access News, “The Association of Canadian Mountain Guides has created the Mountain Conditions Report, a web based information service. The MCR consists of field observations made by mountain guides, posted as and when they see something relevant. The ACMG will also try to provide a synopsis on Thursday or Friday each week. Technical and administrative support is provided by the ACMG, and the objective is to assist recreational mountaineers in planning their trips, and making informed, reasonable decisions. The reports will naturally be limited by the presence (or absence) of guides in a given area at a given time, and their ability to volunteer. See <http://acmg.ca/mcr> for information on how to subscribe, or to see postings.”

EQUIPMENT/TECHNIQUE

Problems with Ortovox M1/M2 avalanche transceivers

Ortovox has announced that variations in the size of AA batteries could result in some of the smaller batteries becoming loose, resulting in loss of

power. The Ortovox website (www.ortovox.com) has a discussion of the problem, an offer by Ortovox of a free replacement battery compartment cover, as well as details about differences between batteries that could cause this problem.

ACCESS NEWS

Sea-to-sky highway upgrade and rock climber's access routes –

According to the 7 November issue of Access News of the Climber's Access Society of B.C.,

"Plans for the highway project are nearly complete. The main outstanding issue is the alignment of the highway in front of the Stawamus Chief, and the nature of the interchange there. Otherwise, the focus is shifting to implementation, in particular pro-active communication with contractors and managers as the project proceeds.

As part of preliminary work, the Access Society agreed with the Ministry of Transportation (MoT) and B.C. Parks to re-route the Papoose access trail. It is almost complete. The new trail leaves the Shannon Falls Provincial Park access road just before (south) of where it crosses Shannon Creek. A new descent route, along the north shoulder of the Papoose, was also created - it involves scrambling, but a hand line may be placed in key areas. Thanks to Windfirm Tree Services, Jody Alexander, and Matt Woods for their work, to MoT for a grant for the project, and to B.C. Parks (Chris Gooliaff) for help with the route.

MoT did considerable work rehabilitating the Gorge (Cheakamus Canyon) this summer, in the

area of Galaxy Buttress [StarChek], Gotham City, and the Leaning Tower of Pizza. (The area was affected by construction of the Culliton-Cheakamus section in 2004.) Some slope stabilization was done, a new trail built, and anchors checked. Some stabilization remains, but it appears that the area is now safe to climb at. *There is still some loose rock, and all climbers are strongly urged to be alert, and to wear helmets!* (There have also been reports of tourists trundling rocks in the area.) Thanks to MoT for its work on this restoration.

With regard to Conroy Ck. in the Cheakamus area, "The Ministry of Forests (Squamish District) has recently done some helpful work at Conroy Creek. They graded the road and made some small improvements, including ditches. This should help keep it drivable. A new parking area, perhaps 100 metres below the existing one, was built, a culvert/pipe was placed, and they have an outhouse to donate which should be erected by spring. The Ministry has also suggested that a recreation area be established, including the key cliffs, parking and trails, and perhaps a small campsite and noticeboard."

VANCOUVER INTERNATIONAL MOUNTAIN FILM FESTIVAL SEEKS FILM AND PHOTO ENTRIES, AND VOLUNTEERS

VIMFF is now calling for mountain film and photo submissions for the 9th Annual Festival event in Vancouver. Entry deadlines are December 15, 2005 for films; and January 13, 2006 for photographs. Winning films will be awarded with financial and material prizes in different categories: Best Film Overall, Best Film on Mountaineering, Best Film on Mountain Culture, Best Film on Rock Climbing, Best Film on Mountain Biking, Best Film on Skiing, Best Water Film, Jury's Award, Best Student Film, and Best Canadian Film. Photographs will compete for awards in 4 categories: Mountain Sport, Mountain Landscape, Mountain Culture, and Mountain Flora and Fauna. Entry forms can be downloaded from www.vimff.org.

VIMFF is also looking for volunteers for the actual festival, as well as for the pre-festival period. Please email info@vimff.org if you are interested. Volunteers get free access to festival events and t-shirts.

The 10 festival evenings and days will be packed with film screenings, multimedia presentations, library book readings, interactive workshops and special events. A few evenings will be dedicated to climbing, mountaineering and backcountry themes. Festival speakers will be officially announced in mid-December, and the complete program finalized by the end of January. Stay tuned for further news at www.vimff.org.

BCMC is a proud supporter of the Best Film on Mountain Culture Award (The David Macaree Award).

TRIP REPORTS

Little Ring, 1 October, 2005

Little Ring is 6 km NW of Mt. Callaghan and just south of the Pemberton Icefield. At 2100 m it is not the highest mountain in the area, but it is isolated from the surrounding mountains and it is dramatically shaped. Its top is a 100 m, sheer walled, flat topped, volcanic plug that sits on 300 vertical metres of 30 degree, volcanic scree slopes.

Twelve people were interested in the trip, but four days of rain, and a poor forecast reduced the ranks to five, (Karin Albert, Alastair Ferries, Dan Friedman, Michael Fuhrmann, and 'mountain god' – Stas Liarski). At 7 am Saturday it was raining. The unbroken grey raincloud was at 1100 m. The forecast was for rain all day. And it was a 2 ½ hour drive to the start of the hike.

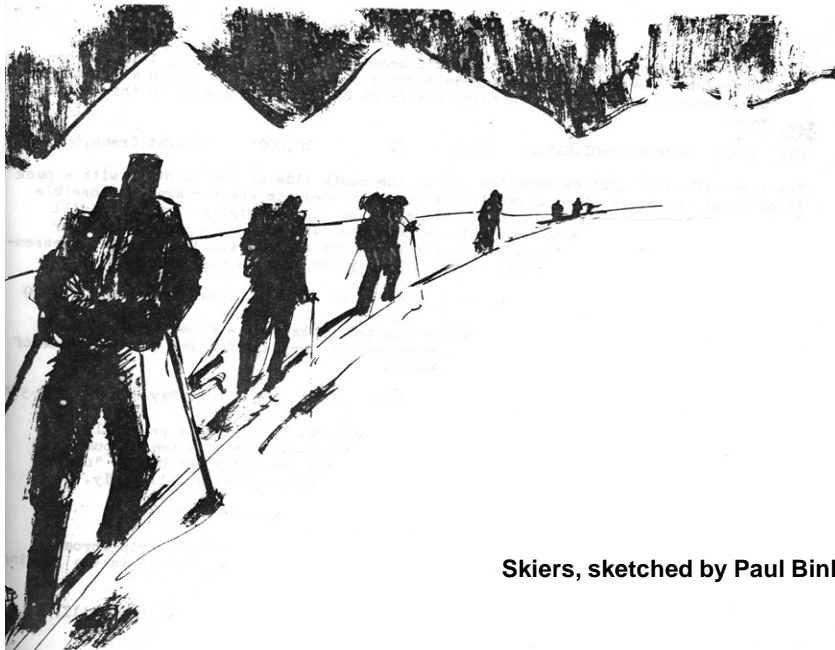
They all wanted to do it. Especially Dan. So off we drove. By 10 am we were hiking in a fine drizzle. Soon this fine drizzle turned into wet snow. Nobody was completely prepared for winter. At 1500 m we were bushwhacking up a steep slope with 2 cm of slippery snow covering everything. Pulling on blueberry bushes it was often one step upwards, four steps backwards. But we made pretty good progress. And while having a chilly lunch at the base of the scree slope we started to get breaks in the

clouds. And the light snowcover made the glimpses of Little Ring very pretty. And when we started up the scree the snow and temperature had actually solidified the scree, making it easier. And we kept getting more breaks in the clouds. And the snow and cold also made the summit scramble easier. (Even for mountain god who went straight up it.) So in less than four hours from the cars we were all on the summit.

There we sat freezing (except Karin – relaxing in an Arctic-rated down parka that bulked her up twofold) in 65 km/hour winds for one hour, hoping for a completely clear view of the icefield. Although this didn't happen, we got some good glimpses. Then on the scree descent it cleared enough to give us great views of snow covered Little Ring. And despite my overconfidently leading back by instinct rather than by compass (which resulted in a correction) we were back to the cars before dark.

We didn't meet the grizzly bear that Michael did on the same trip one month earlier. ("I thought I was about to become lunch" – Michael.), and in what initially seemed like poor weather we ended up having a great day.

Alastair Ferries (Organizer and reporter).



Skiers, sketched by Paul Binkert.



Don't miss the December social evening slide show featuring this photo and others by Linda Bily on Mt. Logan.

9th vancouver international mountain film festival

vancouver: feb 17 – 26, 2006
on tour: march – november 2006

submit your films and photos
 deadlines
 dec 15, 2005 (films)
 jan 15, 2006 (photos)

www.wimff.org

photo: hermann erber, design: jana simova

MOUNTAIN EQUIPMENT CO-OP

north shore news

THE NORTH FACE
 NEVER STOP EXPLORING
 www.thenorthface.com

ARCTERYX

explore
 powered by outdoor magazine

PETZL

Gripped

City of Vancouver

British Columbia



Where we would like to be in December!